



Model:

# 1443B

Product Type:

## PROFESSIONAL HAND RIVET NUT KIT SAE & METRIC WITH RIVET NUTS



### WARNING



Study, understand and follow all instructions provided with this product. Read these instructions carefully before installing, operating, servicing or repairing this tool. Keep these instructions in a safe accessible place.

#### INTENDED USE OF THE TOOL

The 1443B is designed to set the rivet nuts of the following thread pitches: 1/4-20, 10-24, 8-32, 10-32, M4x0.7, M5x0.8, and M6x1.0. Do not use this tool outside of the designed intent. Never modify the tool for any other purpose or use.



### WARNING



#### Caution: To help prevent personal injury

- Use of this product can expose you to chemicals including ethylene glycol, gasoline vapors and engine exhaust, which are known to the State of California to cause cancer, birth defects, or reproductive harm. For more information, visit [www.P65Warnings.ca.gov](http://www.P65Warnings.ca.gov). Always wear ANSI approved safety equipment, safety glasses and clothing when using this product. Study, understand, and follow all instructions provided with this product. Failure to read and follow all warnings and operating instructions may result in damages and serious injury or death.
- Always wear ANSI approved goggles when using this product. (Users and Bystanders).
- Never use this tool for any application other than for which it was designed.
- Only use accessories designed for this tool.
- Never alter or modify this tool in any way.
- Improper operation and/or maintenance of the tool, modification of the tool, or use of the tool with accessories not designed for it could result in serious injury or death.
- Always select the correct accessories of the correct size and design for the job that you are attempting to perform.
- Always work in a clean, safe, well-lit, organized and adequately equipped area.
- Do not begin repairs without assurance that vehicle is in secure position, and will not move during repair.



## Astro Pneumatic Tool Company

[www.astrotools.com](http://www.astrotools.com)

#### 1 YEAR LIMITED WARRANTY

- Astro Pneumatic Tool Co. warrants our products to the original user against defective material or workmanship for a period of 1 year (except where noted on our price schedule) from the date of 1st use. Astro reserves the right to determine whether the product failed because of defective material, workmanship or other causes and to charge back for missing parts. Astro Pneumatic Tool Co., at its discretion, will repair products covered under this warranty free of charge. The distributor should direct the original user to return the product (with the exceptions listed below) with the distributor's name, address, adequate proof of date of purchase or a copy of warranty card, and a short note explaining the problem. **Failures caused by accident, alteration, or misuse are not covered by this warranty.**
- Astro Pneumatic Tool Co. or its authorized service representatives must perform all warranty repairs. Any repair to the product by unauthorized service representatives voids this warranty. The rights under this warranty are limited to the original user and may not be transferred to subsequent owners.
- This warranty is in lieu of all other warranties, expressed or implied, including warranties of merchantability and fitness for a particular purpose. Some states do not allow the exclusion of limitations of incidental or consequential damages so the above limitations may not apply to you.



PLEASE DO NOT RETURN ANY PRODUCT WITHOUT CALLING  
1-800-221-9705 FOR INSTRUCTIONS



#### BEFORE USE

Before use, check the parts diagram and part number listing on page 3 to make sure all parts are included. If any parts are missing or damaged, please call your distributor.

#### PRODUCT INFORMATION:

- The most robust and powerful pistol style hand rivet nut setter yet
- At only 7.5" long, fits where most 1/4" capacity tools do not
- Includes rivet nut assortment and size M4, M5, M6, 8-32, 10-24 and 1/4-20

#### TECHNICAL DESCRIPTION:

Weight: 1.54 lbs. (700g)

Length: 7.48" (190mm)

Max Working Stroke: 7mm

Max Effective Working Stroke: 5mm

#### PROFESSIONAL HAND RIVET NUT KIT SAE & METRIC WITH RIVET NUTS



MADE IN CHINA

### DO NOT DISCARD – GIVE TO USER



Model:

# 1443B

Product Type:

## PROFESSIONAL HAND RIVET NUT KIT SAE & METRIC WITH RIVET NUTS



### WARNING



Always wear ANSI approved safety goggles when using this product (Users and Bystanders). Failure to read and follow all warnings and operating instructions may result in damages and serious injuries or death.

### DRILL SIZE GUIDE:

*Metric*

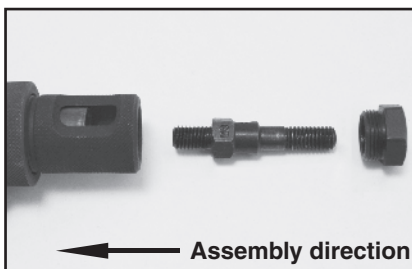
Nut Size	Drill Size
M4	6mm (7/32")
M5	7mm (9/32")
M6	9mm (3/8")

*SAE*

Nut Size	Drill Size
8-32	6mm (7/32")
10-24	7mm (9/32")
1/4-20	9mm (3/8")

### OPERATING INSTRUCTIONS:

1. Choose the rivet nut size to be installed.
2. Install the correct size mandrel/nosepiece for the rivet nut to be installed. See photos and instructions for changing the mandrel/nosepiece and adjustment.
3. Drill a hole in the work product the same size or slightly larger than the outside diameter of the rivet nut to be installed.
4. To install the rivet nut, open the handles outward as far as possible and thread the rivet nut clockwise onto the mandrel until reaching the nosepiece.
5. Insert the rivet nut fastened to the riveter into the pre-drilled hole until flush with the work product, and pull handles inward to secure the rivet nut into the hole. If the rivet nut is loose in the hole, open the handles outward, turn #10 knob clockwise, and pull handles inward until the rivet nut is secure in the hole. Repeat as necessary until the rivet nut is secure in the hole. See adjustment instructions if necessary.
6. Turn the #10 knob counterclockwise until the mandrel is removed from the rivet nut. The rivet nut installation is complete if the rivet nut is secure from movement in the hole.



### CHANGING MANDREL/ NOSEPIECE INSTRUCTIONS:

1. Remove and install the mandrel and nosepieces. Always keep the matched mandrel/nosepiece sets together.
2. Remove nosepiece from #16 sleeve by unthreading the nose piece counterclockwise. This can be done either by hand or with the provided wrench if too tight to do so.

3. Using your thumbnail or tool, press down to depress the #15 inner hexagonal sleeve that sits within the #16 outer sleeve. This should expose the lower hex portion of the mandrel.



4. Unthread the mandrel by hand to remove it from the sleeve. Once the mandrel has been threaded out far enough to clear the #15 hex sleeve you may release tension on this sleeve collar.
5. Choose the correct mandrel/nosepiece to be installed.



6. Thread the new mandrel into the tool by hand until it approaches the #15 hex sleeve and fully depress this sleeve to allow the mandrel to be threaded further until it stops. The mandrel does not need to be torqued. Release the hex sleeve and allow it to fully reengage the mandrel. If the mandrel and hex sleeve do not initially align, rotate the #10 knob while holding onto the mandrel until it clicks up and reengages.
7. Thread the matching nose piece into the #16 by hand. Torquing the nose piece is optional.



Model:

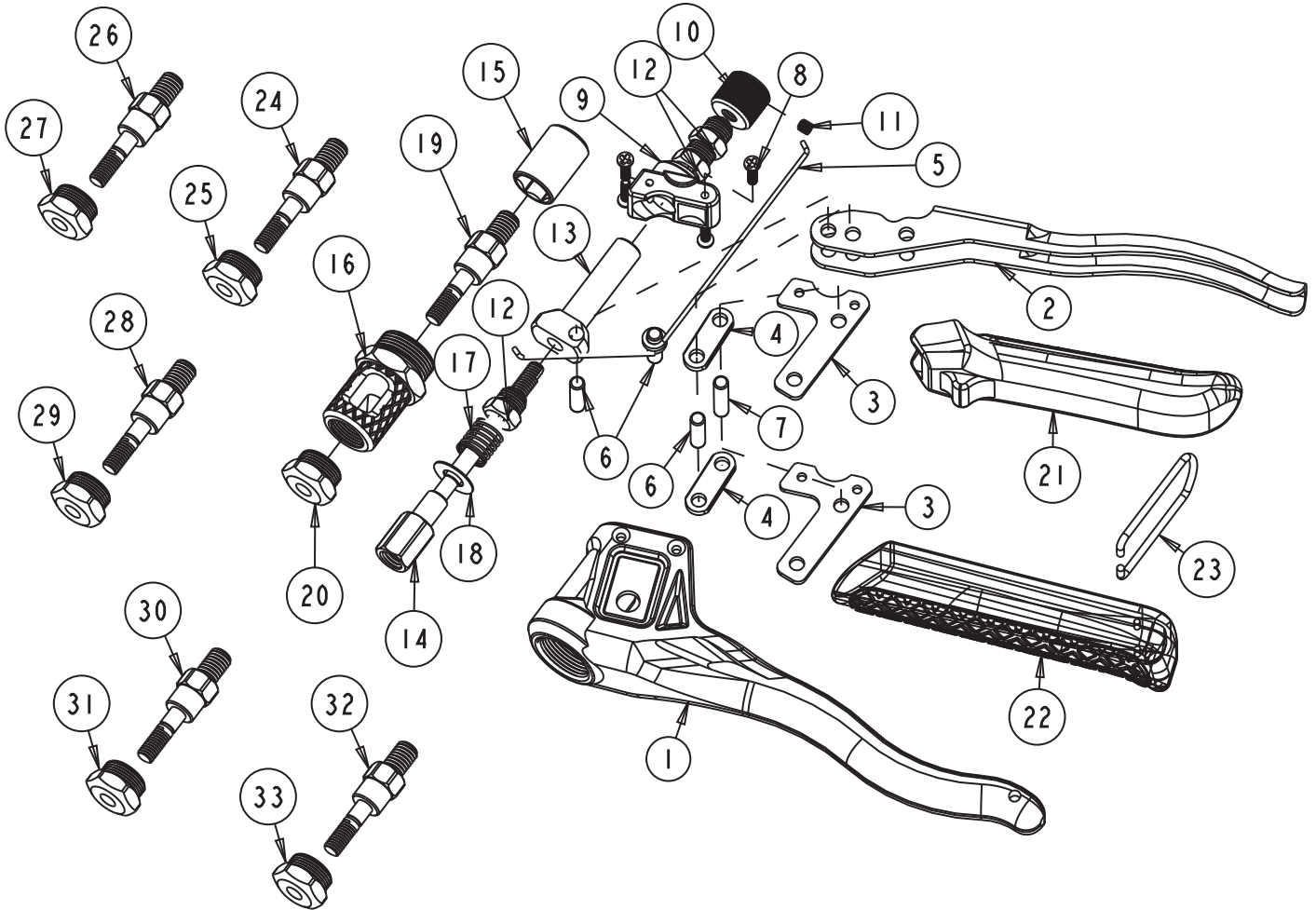
# 1443B

Product Type:

## PROFESSIONAL HAND RIVET NUT KIT SAE & METRIC WITH RIVET NUTS

### PARTS BREAKDOWN

Call 1.800.221.9705 for questions concerning performance of the product or other inquiries.



### Parts List

Index	Part No.	Description	Qty
1	1443B-01	Aluminium Alloy Body	1
2	1443B-02	Top Handle	1
3	1443B-03	Fixed Plate	2
4	1443B-04	Connecting Rod	2
5	1443B-05	Torsional Spring	1
6	1443B-06	5x18 Pin Rod	3
7	1443B-07	5x22 Pin Rod	1
8	1443B-08	3x4 Wafer Head Self Tapping Screw	4
9	1443B-09	Fixing Sleeve	1
10	1443B-10	Knurled Knob	1
11	1443B-11	4x4 Headless Socket Screw	1

Index	Part No.	Description	Qty
12	1443B-12	Spacer	3
13	1443B-13	Loop Bar	1
14	1443B-14	Pull Rod	1
15	1443B-15	Sliding Sleeve	1
16	1443B-16	Sleeve	1
17	1443B-17	Spring	1
18	1443B-18	Spacer	1
19	1442-A30	M5 Mandrel	1
20	1442-A31	M5 Nosepiece	1
21	1443B-21	Top Handle Sleeve	1
22	1443B-22	Lower Handle Sleeve	1
23	1443B-23	Pothook	1

Index	Part No.	Description	Qty
24	1443B-24	M4 Mandrel	1
25	1443B-25	M4 Nosepiece	1
26	1442-A28	M6 Mandrel	1
27	1442-A29	M6 Nosepiece	1
28	1443B-28	8-32 Mandrel	1
29	1443B-29	8-32 Nosepiece	1
30	1442-A34	10-24 Mandrel	1
31	1442-A35	10-24 Nosepiece	1
32	1442-A32	1/4-20 Mandrel	1
33	1442-A33	1/4-20 Nosepiece	1