

Installation Notes: Pyramid Crossdraft

1. Become familiar with all pertinent drawings and booth components.
2. Layout the perimeter of the booth with a chalk line. Reference the drawing PYRAMID-CF GENERAL LAYOUT sheet 1 for booth dimensions. Check for square and level as you anchor the floor channel and panels into place.
3. Begin the booth assembly with the exhaust chamber. Anchor two pieces of tie angle (TG4-0360), the bottom horizontal panel (PG8HS-24144), and the floor channel (FLC8-1200) to the floor as shown in drawing PYRAMID-CF CHAMBER ASSEMBLY sheet 4. Assemble the entire exhaust chamber using the 5/16" x 3/4" bolts and nuts provided. Bolt the work depth close off panel (PWD-24120) and both rear corner panels (26108R&L) to the exhaust chamber and anchor to the ground.
4. To begin the cabin assembly, anchor the pyramid floor angles (PYJ72 & PYJ108) to the floor as shown in drawing PYRAMID-CF BOOTH ASSEMBLY sheet 5. The floor angle is not used at the location of the personnel door. Bolt the first panel (PG8HS-36108) in each of the sidewalls to the rear corner panels. Bolt the tie-in angles (PYZ72 & PYZ108) to the wall panels followed by the roof panel (PG8HS-36144). Progress in this manner, installing two sidewall panels, tie angles, and roof panel as shown in drawing PYRAMID-CF BOOTH ASSEMBLY sheet 5 until you reach the front of the booth. Once you have reached the front of the booth, bolt both frontal side panels (22110IL&R) and the header panel (HP11120) to the sidewall and roof panels. Reference drawing PYRAMID-CF FRONT WALL sheet 6. The frontal door opening must be square and plumb in order for the product doors to operate properly.
5. The personnel door filler panels are bolted into the opening left in the sidewall panels, reference drawing PERSONNEL DOOR & FILLER ASSEMBLY sheet 7. Bolt the doorframe to the filler panels.
6. To begin the product door assembly, bolt the doorframe pieces (DPU0297 & DH02116) into the opening in the front of the booth. Reference drawing IN-DF1008 DOOR ASSEMBLY sheet 8. Install the cage nuts (NC8) and frame stiffener angles (FSA-1217) into the doorframe. Use the metric hardware provided when installing the product doors. Slide the doorframe covers (DPC0394L&R) over the doorframe pieces and bolt the door hinges to the covers. The door hinge assembly is shown in drawing IN-DHA05111 HINGE ASSEMBLY sheet 10. Install the door slabs and door hardware as show in drawing IN-DF1008 DOOR ASSEMBLY sheet 9. Reference drawing LRA0194 LOCKING ROD ASSEMBLY sheet 11 for the locking rod assembly.
7. Caulk all panel seams and cracks making sure to clean the excess caulking immediately.
8. Install the exhaust fan and stack.



Auto Body
TOOLMART
 CALL 1-800-382-1200
 FAX 1-847-462-9247
www.autobodytoolmart.com

CONCEPT REVISION

REV: -	DATE: 11/20/2007	BY: MCFADDEN
--------	------------------	--------------

ORIGINAL

REV: -	DATE: -	BY: -
--------	---------	-------

REV: -	DATE: -	BY: -
--------	---------	-------

REV: -	DATE: -	BY: -
--------	---------	-------

CONTROL REVISION

REV: *	DATE: *	BY: *
--------	---------	-------

REV: *	DATE: *	BY: *
--------	---------	-------

PROJECT

CUSTOMER

•

for

•

DESCRIPTION

INSTALLATION NOTES:
PYRAMID-CF

APPROVED BY

SCALE: NTS	DATE: 17/01/2007
------------	------------------

DRAWN BY: W MCFADDEN	REVIEWED BY: -
----------------------	----------------

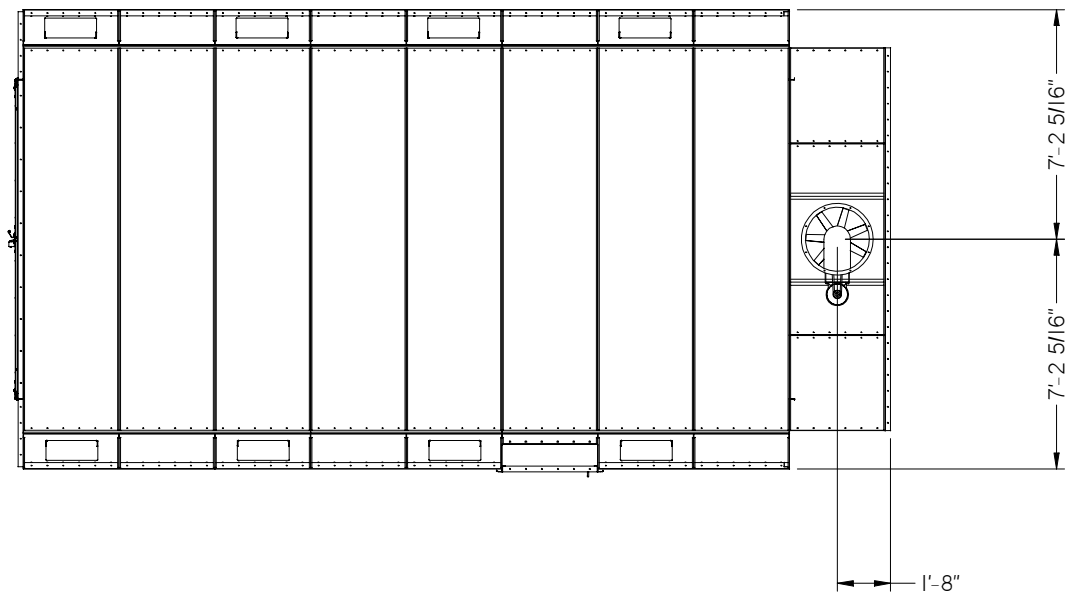
WORK ORDER NUMBER

-

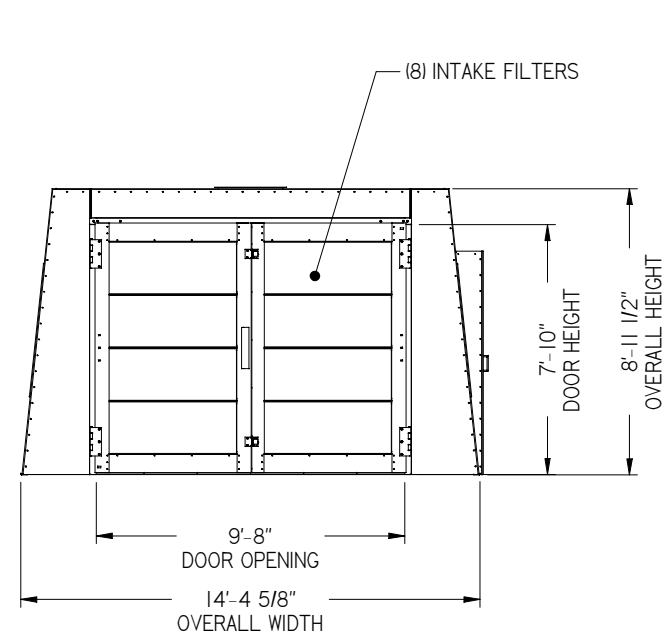
DRAWING NUMBER

-

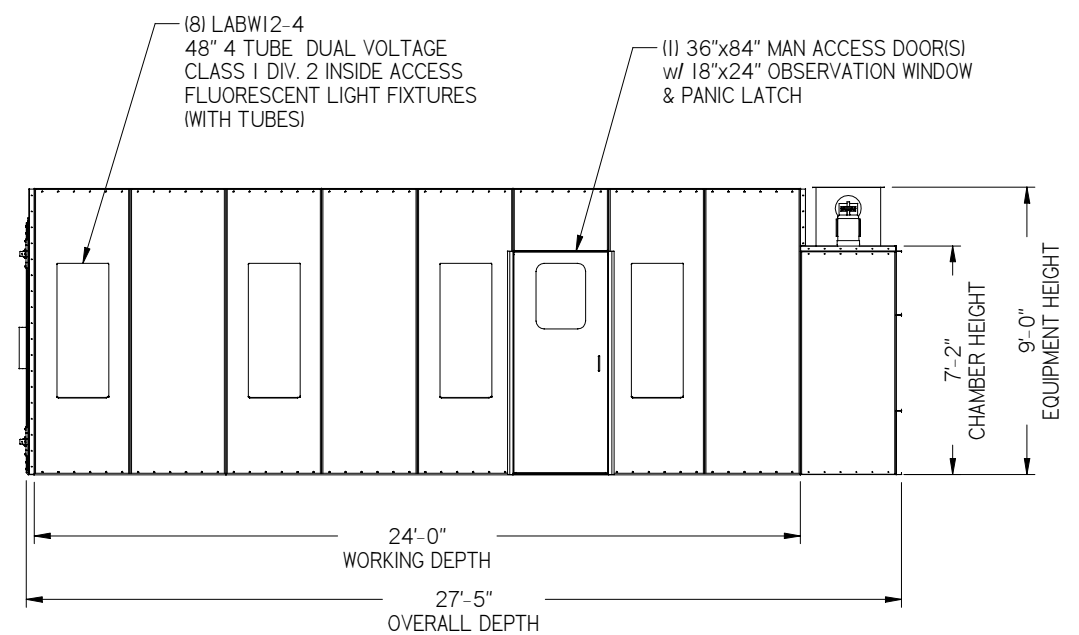
SHEET
1 OF 1



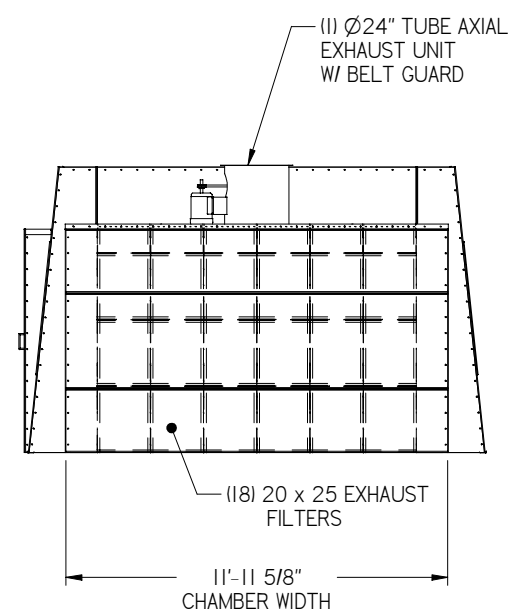
PLAN VIEW



FRONT ELEVATION



SIDE ELEVATION



Auto Body TOOLMART
 CALL 1-800-382-1200
 FAX 1-847-462-9247
 www.autobodytoolmart.com

CONCEPT REVISION

REV:	DATE:	BY:
REV:	DATE:	BY:
REV:	DATE:	BY:
REV:	DATE:	BY:

CONTROL REVISION

REV:	DATE:	BY:
REV:	DATE:	BY:

PROJECT

CUSTOMER
 for

DESCRIPTION
 PYRAMID-CF
 GENERAL LAYOUT

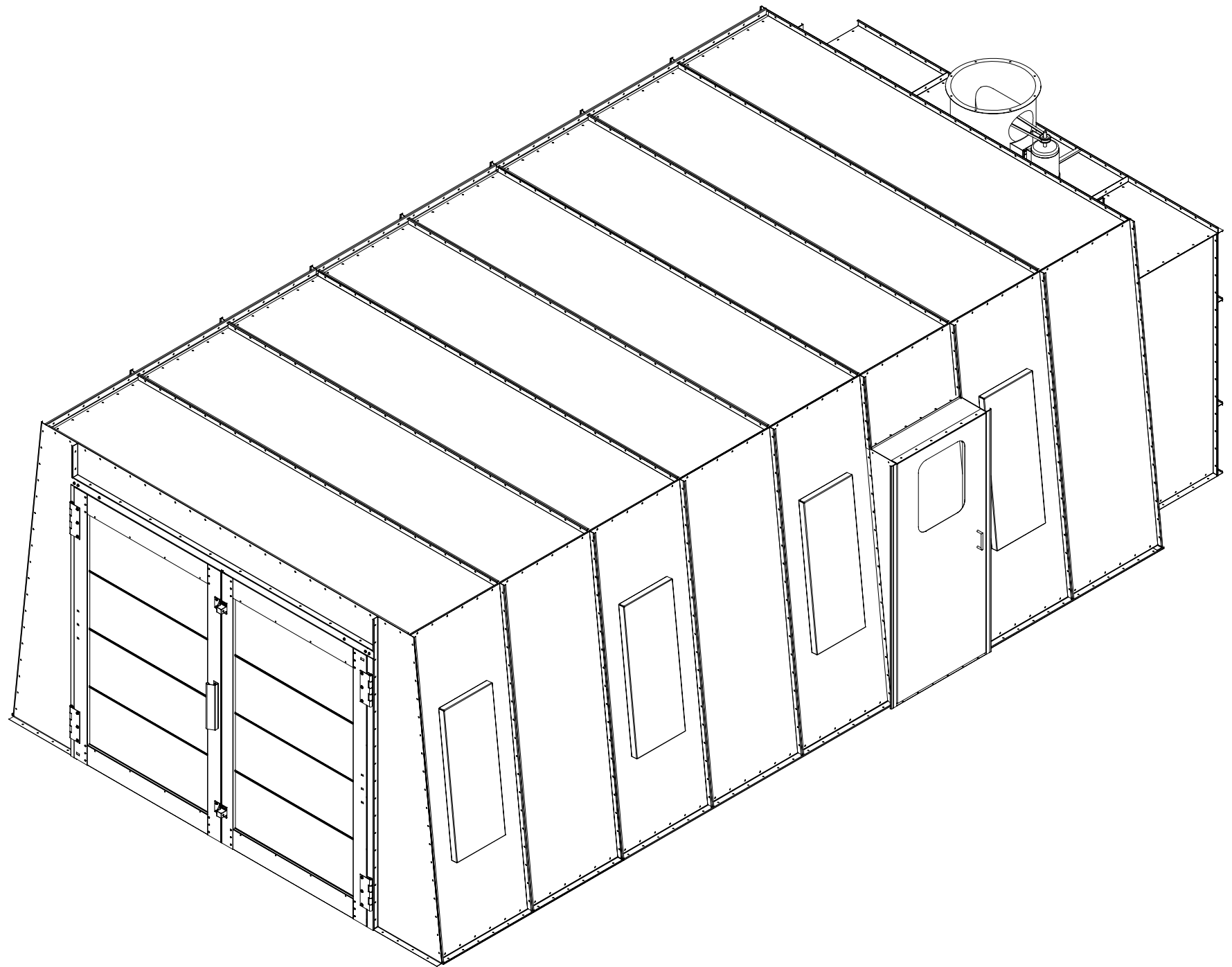
APPROVED BY

SCALE: 3/8"=1'-0"
 DRAWN BY: dquick
 WORK ORDER NUMBER

DRAWING NUMBER
 -01
 SHEET 1 OF 11

A B C D E

1
2
3
4



Auto Body
TOOLMART®
 CALL 1-800-382-1200
 FAX 1-847-462-9247
 www.autobodytoolmart.com

CONCEPT REVISION
 REV: DATE: BY:

REV: DATE: BY:

REV: DATE: BY:

REV: DATE: BY:

CONTROL REVISION
 REV: DATE: BY:

REV: DATE: BY:

PROJECT
 CUSTOMER

for

DESCRIPTION
 PYRAMID-CF
 GENERAL LAYOUT

APPROVED BY

SCALE: NTS	DATE: 11-17-04
DRAWN BY: dquick	REVIEWED BY:

WORK ORDER NUMBER

DRAWING NUMBER
 -02

SHEET
 2 OF 11

CROSS-DRAFT

(NON-PRESSURIZED)

DATA AND SPECS

FAN

Motor	Full load amp draw					Description
	Single	Three phase				
	230V	208V	230V	460V	575V	
Air Exhaust motor Operating FLA	15.4 (28.0)	9.4 (16.7)	8.2 (15.2)	4.1 (7.6)	3.2 (6.1)	24" axial fan with non-ferrous, non-sparking blade and a 3 hp T.E.F.C. drive motor (Optional 34" fan with 5 hp motor)
Min circuit capacity (E3)	30.0 (60.0)	20.0 (30.0)	20.0 (30.0)	10.0 (20.0)	10.0 (20.0)	

Note: Exhaust motor to be installed a minimum of 8' above floor line.

FAN CFM

MODEL L/MOTOR	HP	RPM	TURNS OPEN	CFM							
				FREE AIR	0.125"	0.25"	0.375"	0.5"	0.75"	1.0"	1.25"
GFA-24VP-030	3	1802	6	7136	6988	6763	6487	6212	5601	4621	*
		1907	5	7552	7411	7220	6959	6699	6178	5335	4294
		2011	4	7964	7831	7669	7422	7175	6681	6019	5141
		2116	3	8379	8253	8120	7885	7650	7180	6691	5856
		2220	2	8791	8671	8550	8340	8116	7669	7221	6545

LIGHTING

	QTY	Full load amp draw		Notes
		120V	277V	
(E1)	8	8.0	4.0	(2) 20 Amp circuits req'd (by others) see plan view page 1/2

Notes:

- All light fixtures are accessible from the interior of the spray booth and conform to the provisions of NFPA-33.
- All light fixtures are ETL approved for hazardous locations.
- Add 1 Amp for each additional 4 tube light fixture.

FILTERS

Position	Efficiency	Description
Intake/ Exhaust	99.84% - avg. arrestance 100% - 20 micron paint droplets	Paint Pockets® three dimensional high loft expanded polyester. Reduced filter changes with more than double the effective surface area.

Note: All filters meet Class II of the UL-900 classification.

CODE INFORMATION

Global Finishing Solutions offers a complete line of automotive spray booths that conform to the requirements of:

- NFPA-33 Standard for Spray Application Using Flammable and Combustible Materials
- NFPA-86 Standard for Ovens and Furnaces
- NFPA-91 Standard for Exhaust Systems for Air Conveying of Materials
- NFPA-101 Life Safety Code
- NFPA-70 National Electric Code
- OSHA Safety and Health Standards (29CFR 1910, 1910.107)
- IFC International Fire Code
- IBC International Building Code
- IMC International Mechanical Code
- BOCA National Fire Prevention Code, National Building Code and National Mechanical Code
- UFC Uniform Fire Code
- UBC Uniform Building Code
- UMC Uniform Mechanical Code
- SBCCI Standard Fire Prevention Code, Standard Building Code and Mechanical Code

Electrical components, such as motors, motor starters, disconnect switches and push buttons, are listed or approved for the Class and Division in which they are located. Conformance to all these requirements is dependent upon the manner in which the equipment is installed. The contractor will make certain that all of the electrical wiring and conduit, piping, gas supply, roof penetrations, automatic fire protection systems, and the location of the equipment within the building also conforms to the cited codes and other references.

Note: Fire suppression system is NOT included with the standard booth but is required by NFPA-33.

Glass used in the spray booth is tempered and meets or exceeds ANSI Z-97.1 standard.

Auto Body TOOLMART®
 CALL 1-800-382-1200
 FAX 1-847-462-9247
 www.autobodytoolmart.com

CONCEPT REVISION

REV: DATE: BY:

REV: DATE: BY:

REV: DATE: BY:

REV: DATE: BY:

CONTROL REVISION

REV: DATE: BY:

REV: DATE: BY:

PROJECT

CUSTOMER

for

DESCRIPTION

PYRAMID-CF
DATA SHEET

APPROVED BY

SCALE: DATE:

NTS 11-18-04

DRAWN BY: REVIEWED BY:

dquick .

WORK ORDER NUMBER

DRAWING NUMBER

-03

SHEET

3 OF 11

A

B

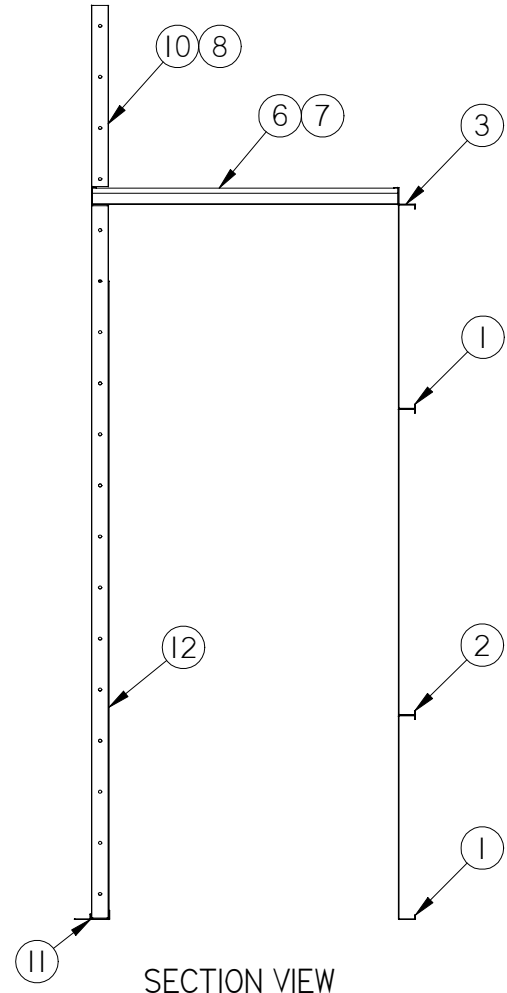
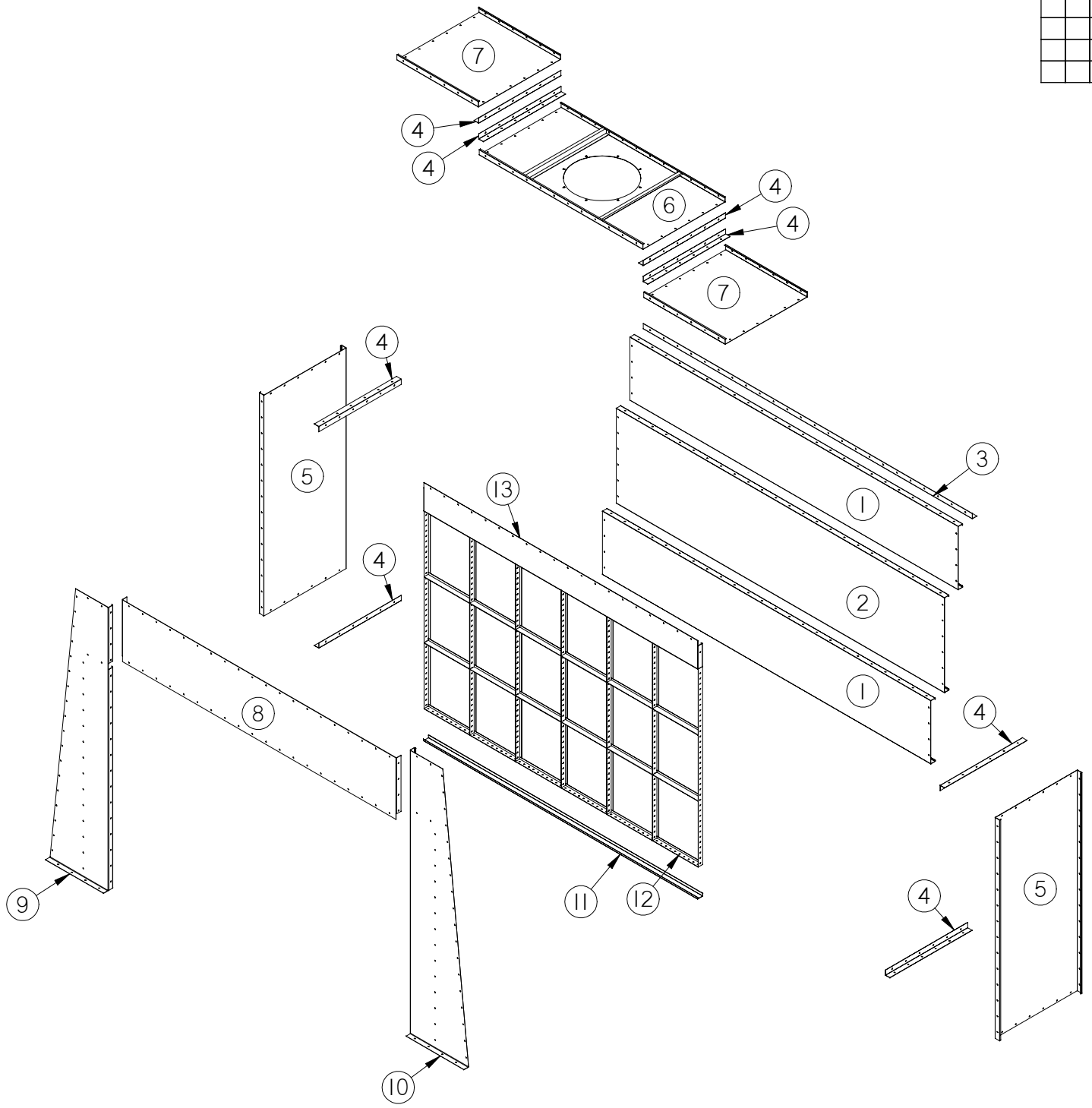
C

D

E

NOTE:
1. USE 5/16" x 3/4" BOLTS & NUTS FOR ALL PANEL TO PANEL CONNECTIONS.

W	B	D	Skid	Item	Qty	Part Number	Description	Material
				1	2	PC8HS-24144	PANEL, 24x143 5/8	18 GA.
				2	1	PC8HS-36144	PANEL, 36x143 5/8	18 GA.
				3	1	TC4-1440	TIE ANGLE, 2x2x144	14 GA.
				4	8	TC4-0360	TIE ANGLE, 2x2x36	14 GA.
				5	2	PC8HS-36084	PANEL, 36x83 5/8	18 GA.
				6	1	PC8HR-36072-24	FAN PANEL, 36x71 5/8	18 GA.
				7	2	PC8HS-36036	PANEL, 36x35 5/8	18 GA.
				8	1	PWD-24120	WORK DEPTH CLOSE-OFF PANEL	18 Ga. Galv.
				9	1	26108R	REAR CORNER PANEL, RIGHT	18 Ga. Galv.
				10	1	26108L	REAR CORNER PANEL, LEFT	18 Ga. Galv.
				11	1	FLC8-1200	FLOOR CHANNEL, 120	18 GA.
				12	6	FRAG8-E2-20075	20x75 EXHAUST FILTER RACK	18 GA.
				13	1	PC8CS-11120-NFRT	PANEL, 10 13/16x120, NOTCH	18 GA.



SECTION VIEW

Auto Body TOOLMART
 CALL 1-800-382-1200
 FAX 1-847-462-9247
 www.autobodytoolmart.com

CONCEPT REVISION

REV: DATE: BY:

REV: DATE: BY:

REV: DATE: BY:

REV: DATE: BY:

CONTROL REVISION

REV: DATE: BY:

REV: DATE: BY:

PROJECT

CUSTOMER

for

DESCRIPTION
PYRAMID-CF
CHAMBER ASSEMBLY

APPROVED BY

SCALE: DATE:
NTS 11-17-04

DRAWN BY: REVIEWED BY:
dquick .

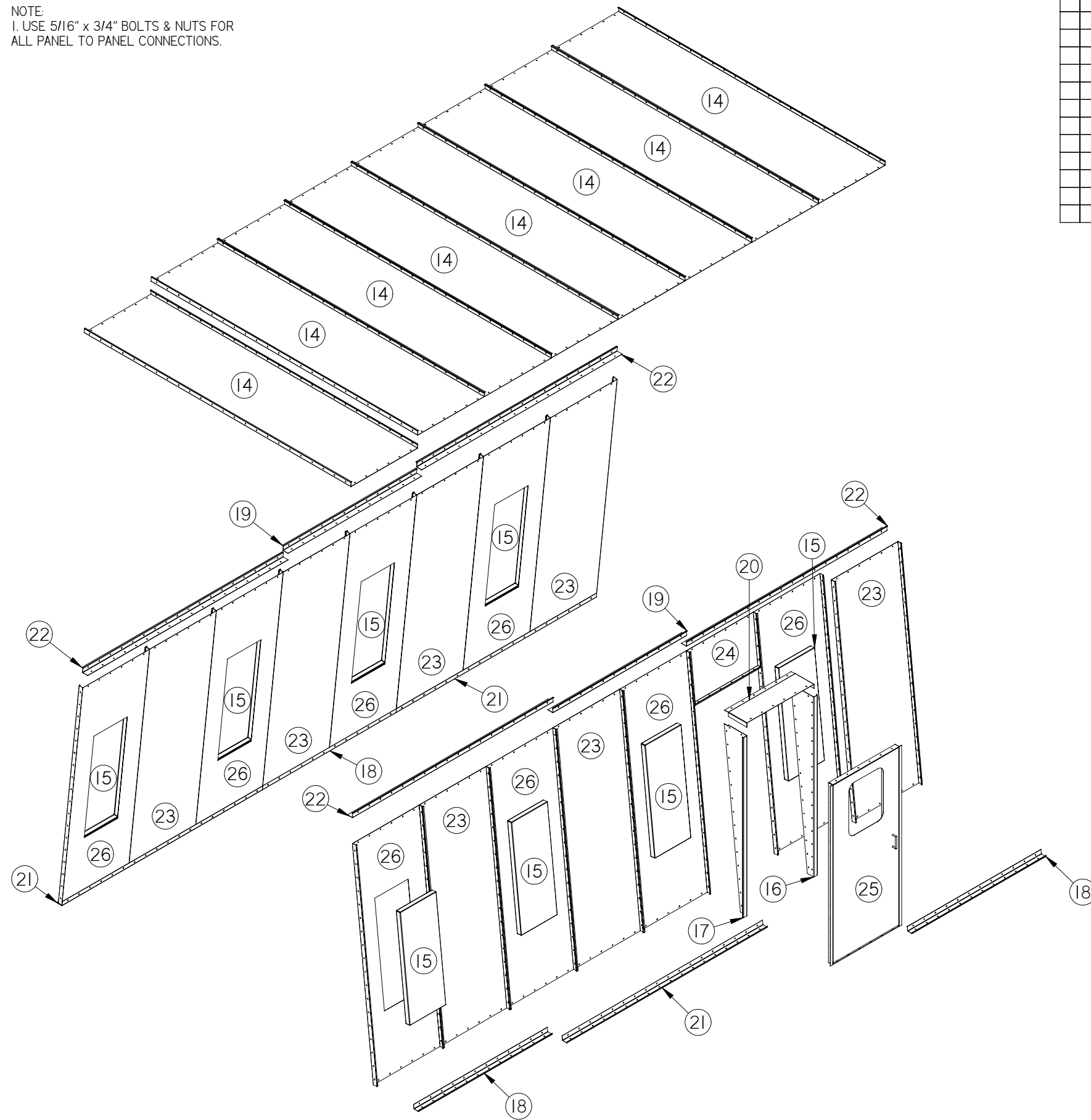
WORK ORDER NUMBER

DRAWING NUMBER

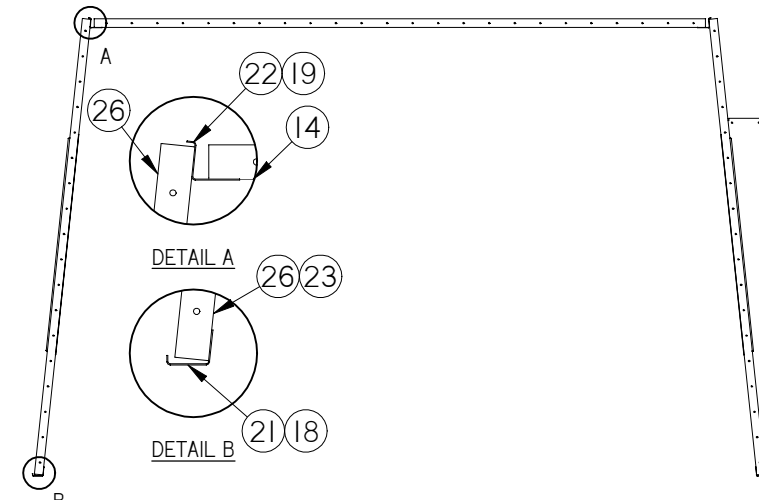
-04

SHEET
4 OF 11

NOTE:
1. USE 5/16" x 3/4" BOLTS & NUTS FOR ALL PANEL TO PANEL CONNECTIONS.



W	B	D	Skid	Item	Qty	Part Number	Description	Material
				14	8	PC8HS-36144	PANEL, 36x143 5/8	18 GA.
				15	8	LABW12-4	4'-4 TUBE LIGHT	18 Ga. Galv.
				16	1	I384R	Access Door Side Filler Plate	18 Ga. Galv.
				17	1	I384L	Access Door Side Filler Plate	18 Ga. Galv.
				18	3	PYJ72	Pyr. Floor Angle 72" Long	14 Gauge
				19	2	PYZ72	Pyr. Tie-In Angle 72" Long	14 Gauge
				20	1	3612	Filler Panel 12" x 36"	18 Ga. Galv.
				21	3	PYJ108	Pyr. BOOTH	14 Gauge
				22	4	PYZ108	Pyr. BOOTH	14 Gauge
				23	7	PC8HS-36108	PANEL, 36x107 5/8	18 GA.
				24	1	PG8CS-24036-3S	PANEL, 23 13/16x36	18 GA.
				25	1	412-004L	36" MAN ACCESS DOOR w/ OBS. WINDOW	GALV
				26	8	PC8HL-36108	LIGHT PANEL, 36x107 5/8	18 GA.



SECTION VIEW

Auto Body TOOLMART
 CALL 1-800-382-1200
 FAX 1-847-462-9247
 www.autobodytoolmart.com

CONCEPT REVISION

REV: DATE: BY:

REV: DATE: BY:

REV: DATE: BY:

REV: DATE: BY:

CONTROL REVISION

REV: DATE: BY:

REV: DATE: BY:

PROJECT

CUSTOMER

for

DESCRIPTION
 PYRAMID-CF
 BOOTH ASSEMBLY

APPROVED BY

SCALE: DATE:
 NTS 11-17-04

DRAWN BY: REVIEWED BY:
 dquick

WORK ORDER NUMBER

DRAWING NUMBER

-05

SHEET
 5 OF 11

A

B

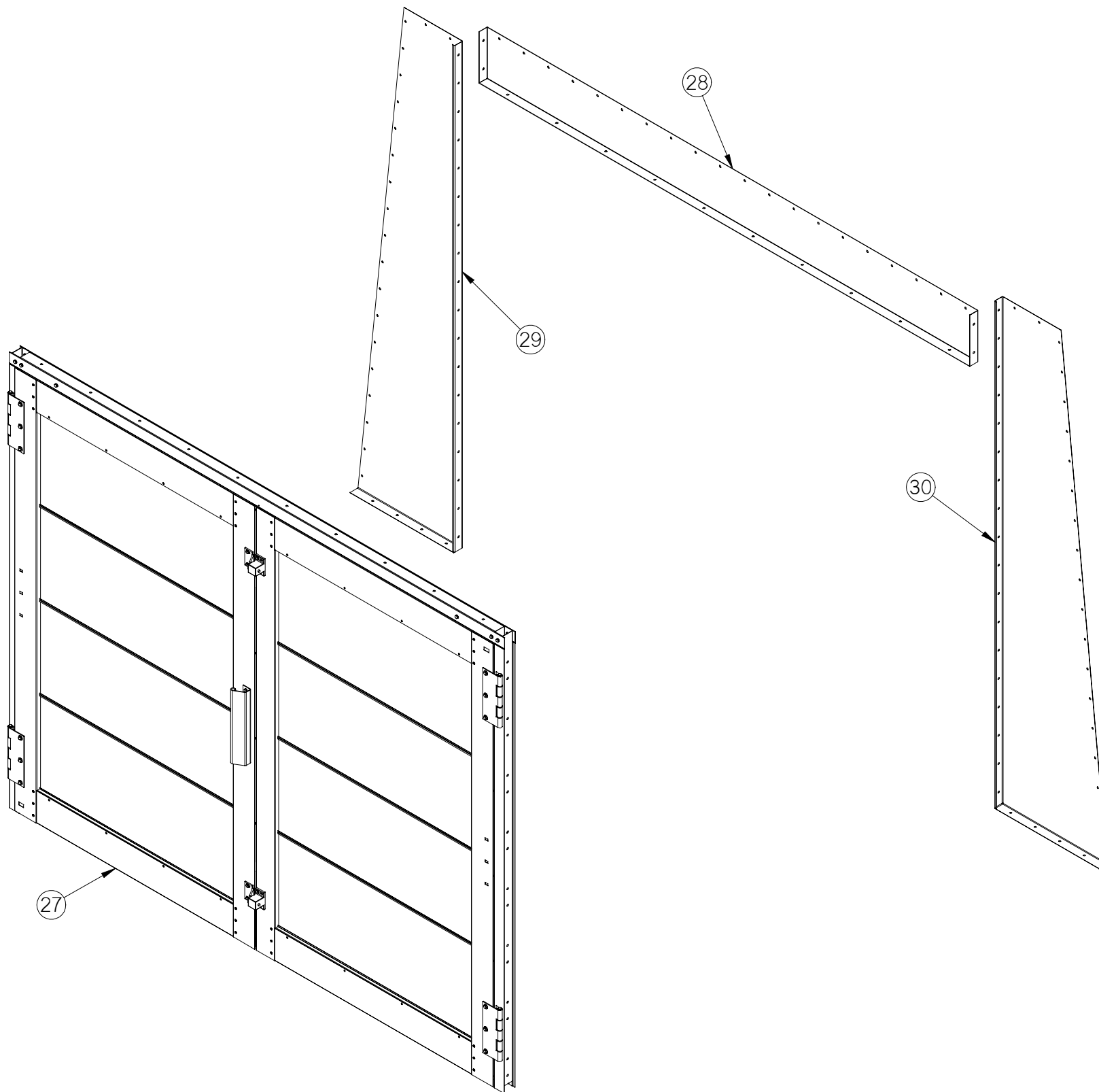
C

D

E

Item	Qty	Part Number	Description	Material
27	1	DF1008	FRONTAL DOORS, 2 SLAB, 10W x 8H	
28	1	HP11120	HEADER PANEL, 11 x 120	18 GA
29	1	22110L	FRONTAL SIDE PANEL, 22 x 110 LEFT	18 GA
30	1	22110R	FRONTAL SIDE PANEL, 22 x 110 RIGHT	18 GA

NOTE:
 1. USE 5/16" x 3/4" BOLTS & NUTS FOR ALL PANEL TO PANEL CONNECTIONS.



Auto Body TOOLMART
 CALL 1-800-382-1200
 FAX 1-847-462-9247
 www.autobodytoolmart.com

CONCEPT REVISION

REV: DATE: BY:

REV: DATE: BY:

REV: DATE: BY:

REV: DATE: BY:

CONTROL REVISION

REV: DATE: BY:

REV: DATE: BY:

PROJECT

CUSTOMER

for

DESCRIPTION

PYRAMID-CF
 FRONT WALL

APPROVED BY

SCALE: DATE:
 NTS 11-17-04

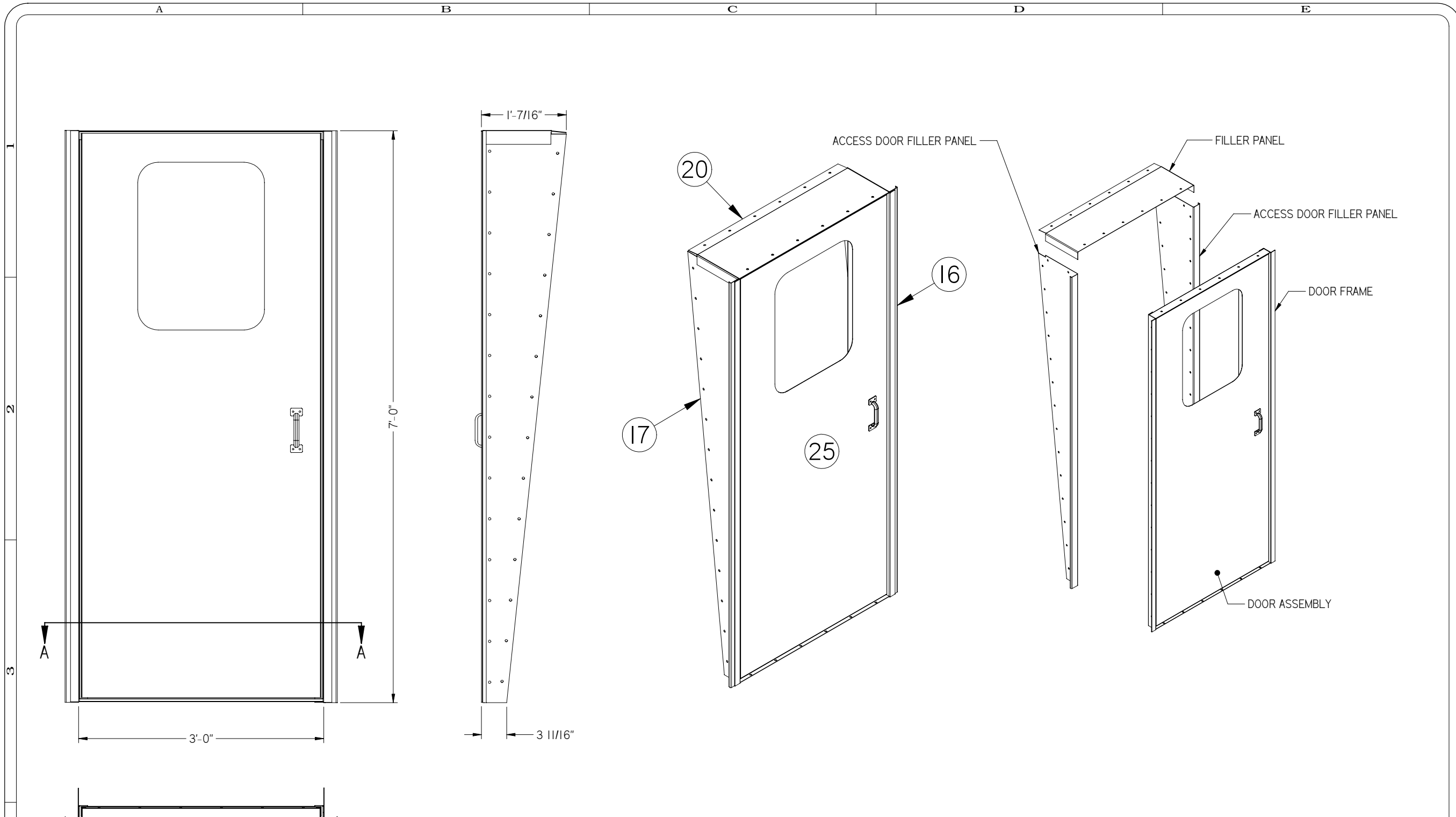
DRAWN BY: REVIEWED BY:
 dquick .

WORK ORDER NUMBER

DRAWING NUMBER

-06

SHEET
 6 OF 11



SECTION A-A

NOTE: ACCESS DOOR FILLER PANELS & FILLER PANEL ARE TO BE BOLTED TO DOOR FRAME.

Item Num	Part Number	Description	Qty
16	1384R	Access Door Side Filler Plate	1
17	1384L	Access Door Side Filler Plate	1
20	3612	Filler Panel 12" x 36"	1
25	412-004L	412-004L	1

Auto Body
TOOLMART
www.autobodytoolmart.com

CALL 1-800-382-1200
FAX 1-847-462-9247

CONCEPT REVISION
REV: DATE: BY:

REV: DATE: BY:

REV: DATE: BY:

REV: DATE: BY:

CONTROL REVISION
REV: DATE: BY:

REV: DATE: BY:

PROJECT

CUSTOMER

for

DESCRIPTION
PERSONNEL DOOR
& FILLER ASSEMBLY

APPROVED BY

SCALE: DATE:
NTS 11-18-04

DRAWN BY: REVIEWED BY:
dquick .

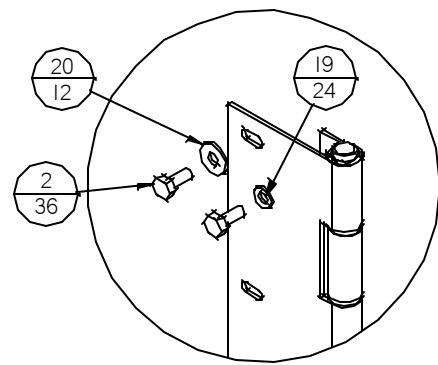
WORK ORDER NUMBER

DRAWING NUMBER
-07

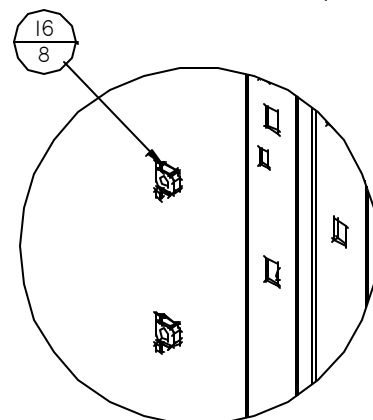
SHEET
7 OF 11

Item Number	Document Number	Title	Quantity
1	BH620	6MM HEX HEAD BOLT 20MM LG	8
2	BH820	HH Bolt (8mm x 20mm)	36
3	DH02116	DOOR HEADER (10"W)	1
4	39047	DOOR HANDLE	2
5	DHA05111	DOOR HINGE ASSEMBLY	4
7	DHC03121	DOOR HEADER COVER (10"W)	1
8	DPC0394L	LEFT DOOR POST COVER - NEOPRENE SEAL	1
9	DPC0394R	RIGHT DOOR POST COVER - NEOPRENE SEAL	1
10	DPU0297	DOOR POST (8"H)	2
11	FDS5792L	FILTER DOOR SLAB, 10"W x 8"H	1
12	FDS5792R	FILTER DOOR SLAB, 10"W x 8"H	1
13	FSA-1217	FRAME STIFFENER ANGLE	2
14	LRA0194	LOCKING ROD ASSEMBLY, 8"H	1
15	39055	DOOR CLICKER	2
16	NC8	8MM CAGE NUT	8
17	39038	STRIKER PLATE, LONG	2
18	WF618	6MM x 18 OD FLAT WASHER	8
19	WF816	8MM x 16 OD FLAT WASHER	24
20	WF824	8MM x 24 OD FLAT WASHER	12

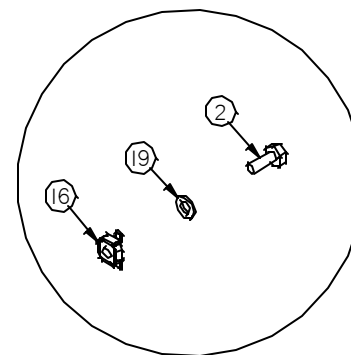
FOR HINGE ASSEMBLY SEE DRAWING IN-DHA051111.



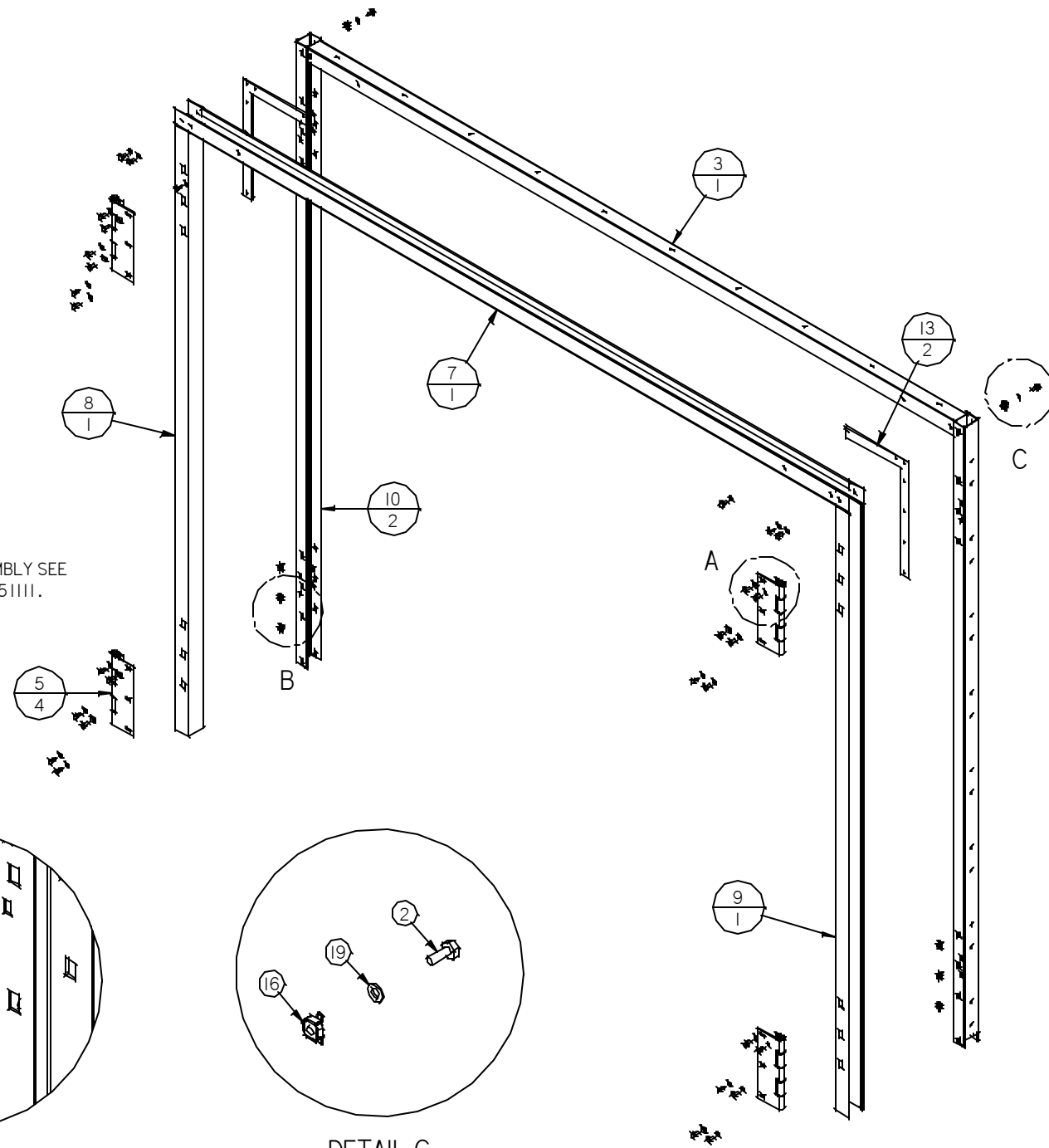
DETAIL A



DETAIL B



DETAIL C



Auto Body
TOOLMART
www.autobodytoolmart.com

CONCEPT REVISION

REV: DATE: BY:

REV: DATE: BY:

REV: DATE: BY:

REV: DATE: BY:

CONTROL REVISION

REV: DATE: BY:

REV: DATE: BY:

PROJECT

CUSTOMER

for

DESCRIPTION

IN-DF1008
DOOR ASSEMBLY

APPROVED BY

SCALE: NTS DATE: 11-18-04

DRAWN BY: dquick REVIEWED BY:

WORK ORDER NUMBER

DRAWING NUMBER

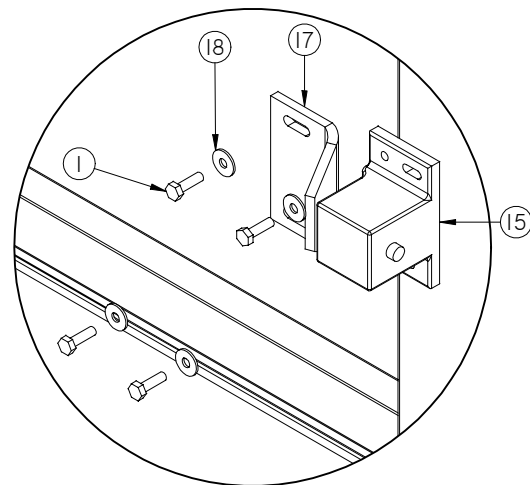
-08

SHEET
8 OF 11

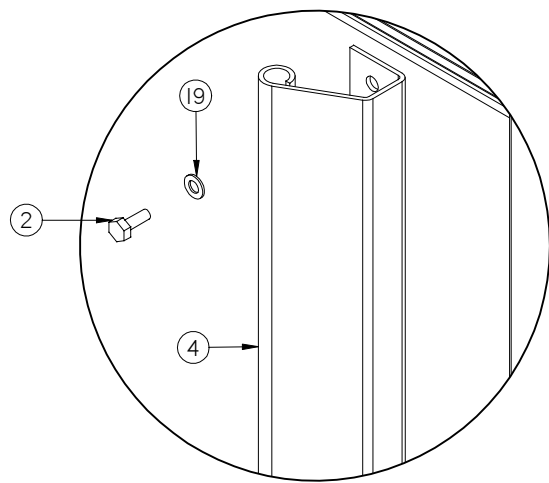
A B C D E

1
2
3
4

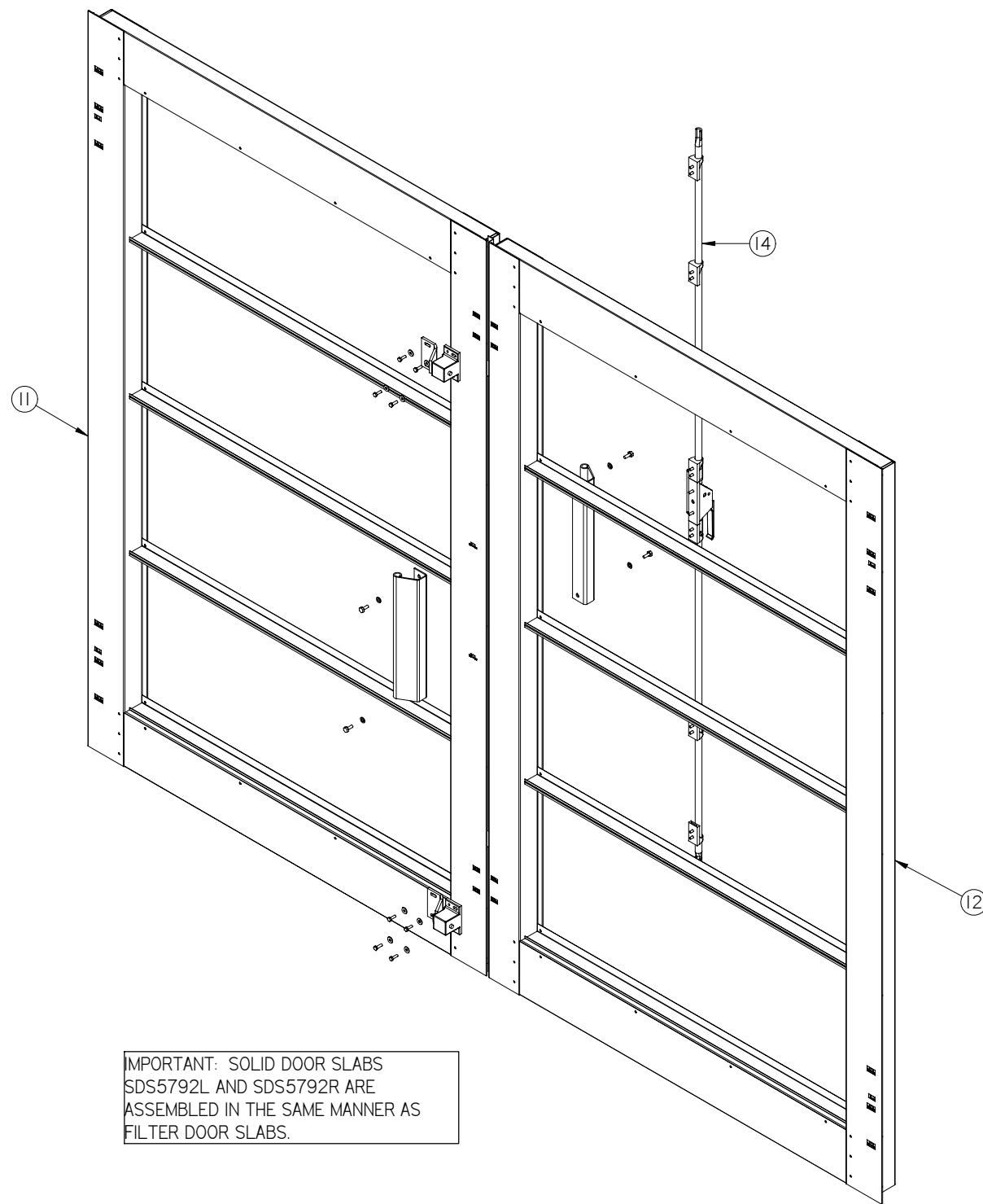
NOTE:
 1. FOR LOCKING ROD ASSEMBLY SEE DRAWING IN-LRA0194.
 2. BOTTOM LOCKING ROD MUST BE TRIMMED SO IT PROTRUDES 9/16" INTO THE 3/4" DIA HOLE IN FLOOR.



DETAIL D



DETAIL E



IMPORTANT: SOLID DOOR SLABS SDS5792L AND SDS5792R ARE ASSEMBLED IN THE SAME MANNER AS FILTER DOOR SLABS.

Auto Body TOOLMART
 CALL 1-800-382-1200
 FAX 1-847-462-9247
 www.autobodytoolmart.com

CONCEPT REVISION

REV: DATE: BY:

REV: DATE: BY:

REV: DATE: BY:

REV: DATE: BY:

CONTROL REVISION

REV: DATE: BY:

REV: DATE: BY:

PROJECT

CUSTOMER

for

DESCRIPTION

IN-DF1008
 DOOR ASSEMBLY

APPROVED BY

SCALE: NTS

DATE: 11-18-04

DRAWN BY: dquick

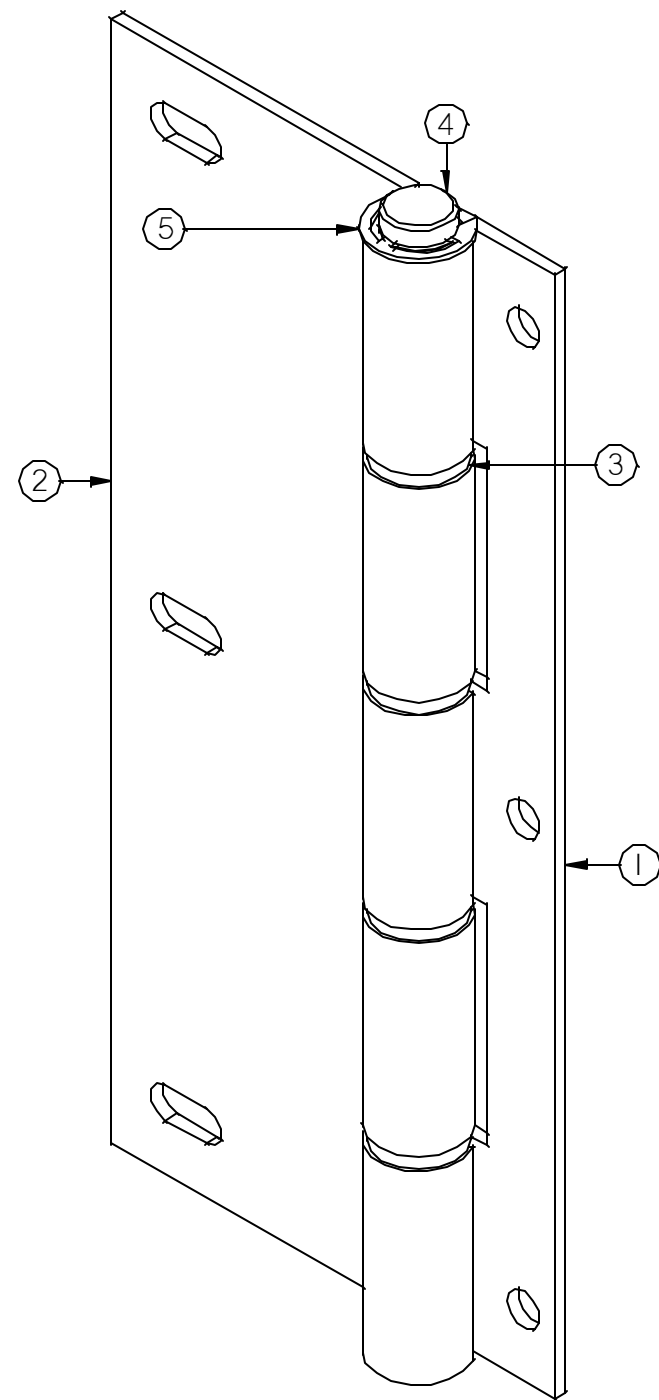
REVIEWED BY:

WORK ORDER NUMBER

DRAWING NUMBER

-09

SHEET 9 OF 11



LEFT HAND SHOWN, ASSEMBLE RIGHT HAND OPPOSITE

Item Number	Document Number	Title	Material	Quantity
1	39035	THREE KNUCKLE PERIMETER HINGE LEAF	11 ga powder coated	1
2	39046	TWO KNUCKLE PERIMETER HINGE LEAF	11 ga powder coat	1
3	39058	BRASS BUSHING	brass	4
4	39057	DOOR HINGE PIN AND C-CLIP	steel	1

NOTE: GREASE HINGE PIN AND BUSHINGS BEFORE ASSEMBLY

Auto Body
TOOLMART[®]
 CALL 1-800-382-1200
 FAX 1-847-462-9247
 www.autobodytoolmart.com

CONCEPT REVISION

REV: DATE: BY:

REV: DATE: BY:

REV: DATE: BY:

REV: DATE: BY:

CONTROL REVISION

REV: DATE: BY:

REV: DATE: BY:

PROJECT

CUSTOMER

for

DESCRIPTION

IN-DHA05111
 HINGE ASSEMBLY

APPROVED BY

SCALE: DATE: 11-18-04

DRAWN BY: REVIEWED BY:

dquick

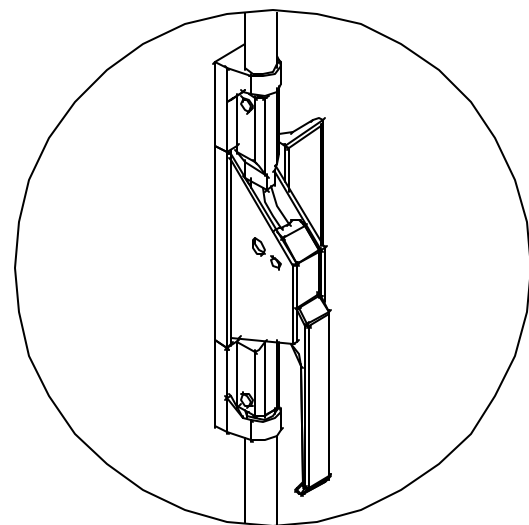
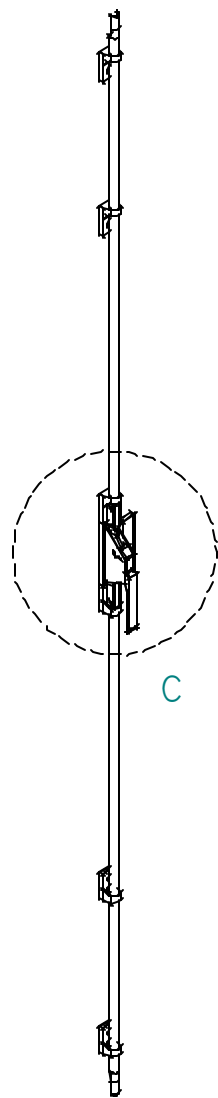
WORK ORDER NUMBER

DRAWING NUMBER

-10

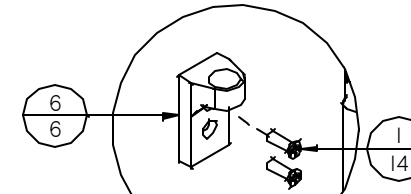
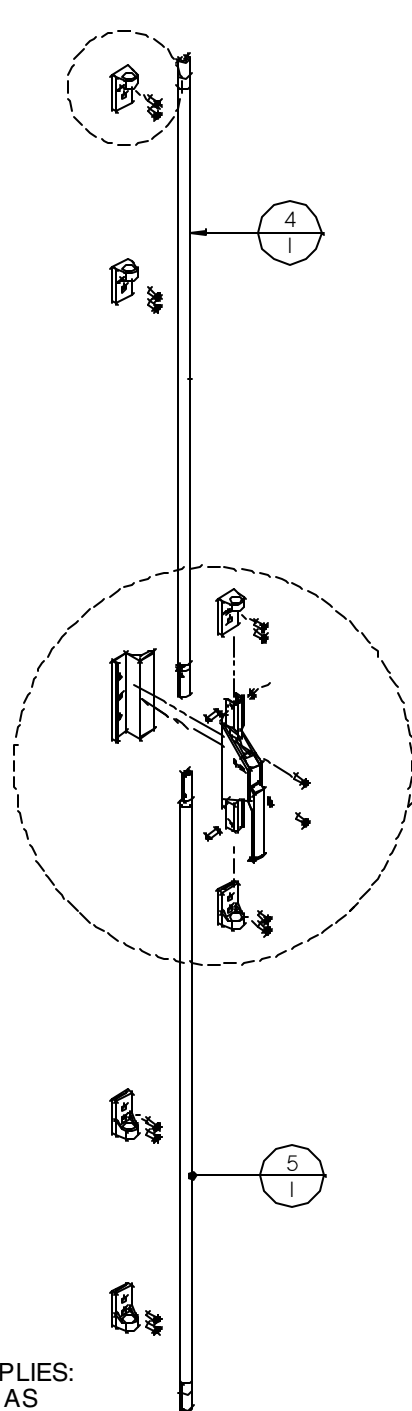
SHEET
 10 OF 11

Item Number	Document Number	Title	Quantity
1	BF620	6MM-1.00 x 20MM FLAT HEAD PHILLIPS	14
2	39051	DOOR HANDLE	1
3	39050	LEVER LATCH	1
4	LR7544	LOCKING ROD	1
5	LR7551	LOCKING ROD	1
6	39021	ROD EYELET	6

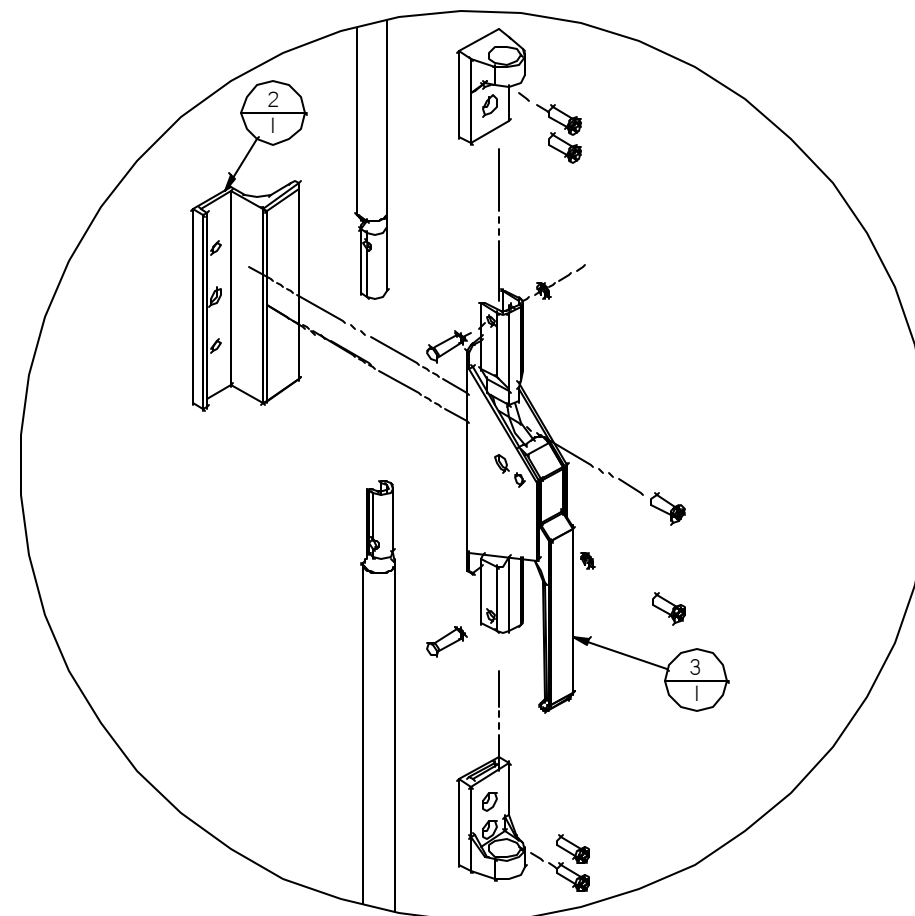


DETAIL C

IMPORTANT:
 FOR DOORS WITHOUT THRESHOLDS THE FOLLOWING APPLIES:
 1. LR7551 IS LONGER THAN LR7544 AND SHOULD BE USED AS THE BOTTOM LOCKING ROD.
 2. THE BOTTOM LOCKING ROD MUST BE TRIMMED SO IT PROTRUDES 9/16" INTO THE 3/4" DIA HOLE IN FLOOR.



DETAIL A



DETAIL B

Auto Body TOOLMART
 CALL 1-800-382-1200
 FAX 1-847-462-9247
 www.autobodytoolmart.com

CONCEPT REVISION

REV. DATE BY

REV. DATE BY

REV. DATE BY

REV. DATE BY

CONTROL REVISION

REV. DATE BY

REV. DATE BY

PROJECT

CUSTOMER

for

DESCRIPTION

LRA0194
 LOCKING ROD ASSY

APPROVED BY

SCALE: DATE:

NTS 11-18-04

DRAWN BY: REVIEWED BY:

dquick

WORK ORDER NUMBER

DRAWING NUMBER

-11

SHEET
 11 OF 11