

Hood Rotisserie

Made In USA

CHAMP[®]

Frame Straightening Equipment Inc.



Auto Body Toolmart

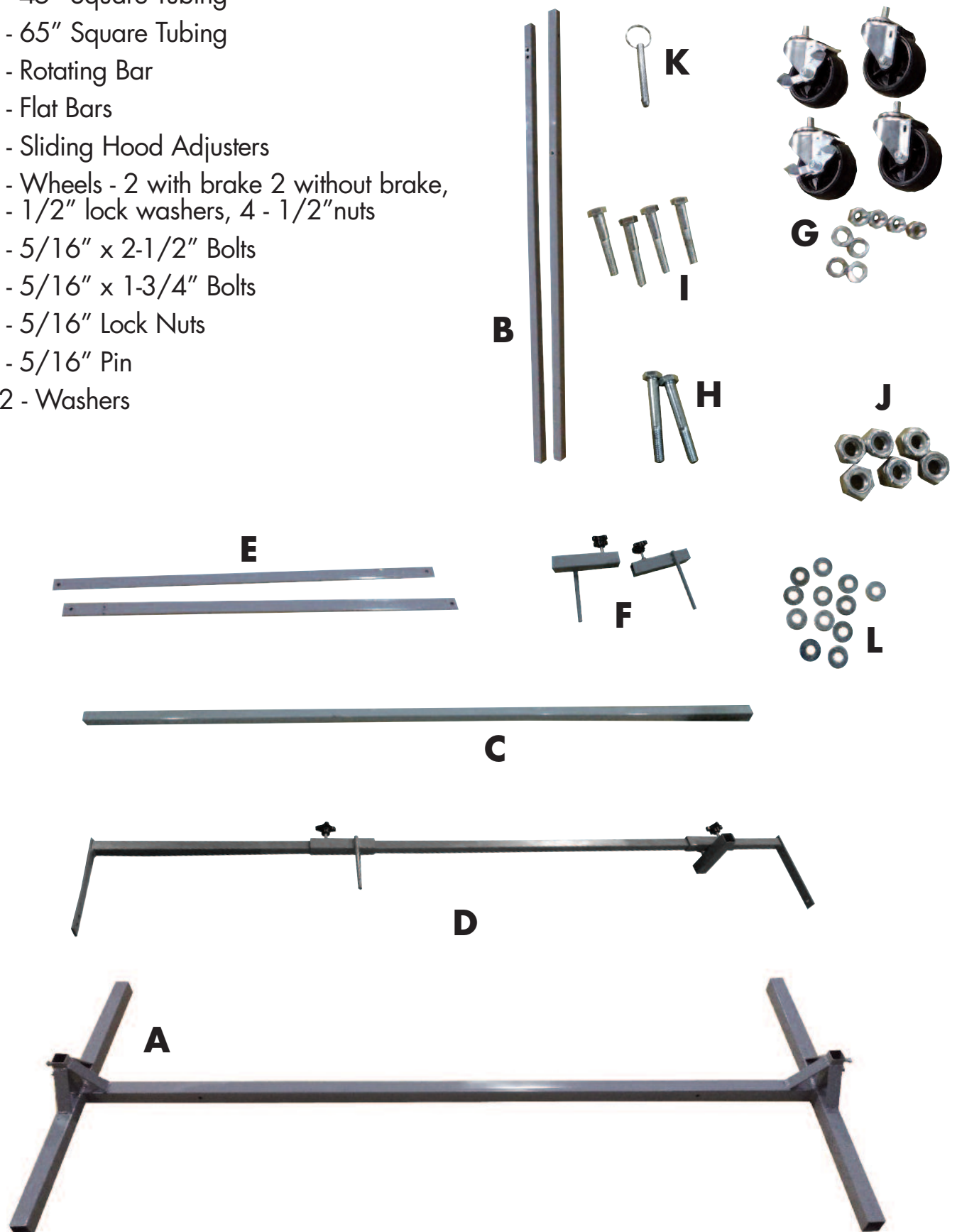
Champ Frame Straightening Equipment, Inc.

2545 Millennium Dr., Elgin, IL 60124 (800) 382-1200

www.autobodytoolmart.com

Parts List

- A** 1 - Support Base
- B** 2 - 45" Square Tubing
- C** 1 - 65" Square Tubing
- D** 1 - Rotating Bar
- E** 2 - Flat Bars
- F** 2 - Sliding Hood Adjusters
- G** 4 - Wheels - 2 with brake 2 without brake,
4 - 1/2" lock washers, 4 - 1/2" nuts
- H** 2 - 5/16" x 2-1/2" Bolts
- I** 4 - 5/16" x 1-3/4" Bolts
- J** 6 - 5/16" Lock Nuts
- K** 1 - 5/16" Pin
- L** 12 - Washers



Instructions

1.



- Lay support base flat on ground

2.



- Attach wheels to base using the 1/2" lock washers and 1/2" lock nuts.

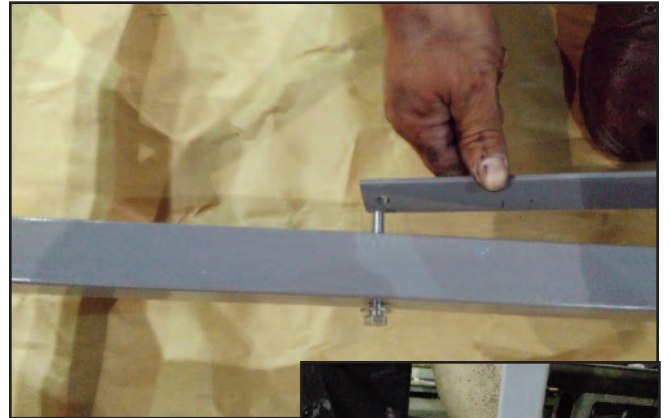


3.



- Insert 47" tubing to both sides of the base.

4.



- Attach flat bars to base and square tubing on both sides using the 4 - 5/16" x 1-3/4" bolts.



5.



- Attach the rotating bar to the 47" tubing bars.

NOTE: Make sure you line up the rotating bars to the holes in the 47" square tubing. One side of tubing and one side of rotating bar have two holes.

6.



- Connect the 65" square tubing to the rotating bar. It slides right on.

7.



- Attach the the sliding hood adjusters to the 65" square tubing. They slide on and can be adjusted when attaching a hood to the hood rotisserie.

8.



- Insert pin through vertical square tubing and the rotating bar.

9.

- Hood attaches on three points. To rotate the hood, remove the pin and rotate bar. Hood can be positioned upright or horizontally.

