

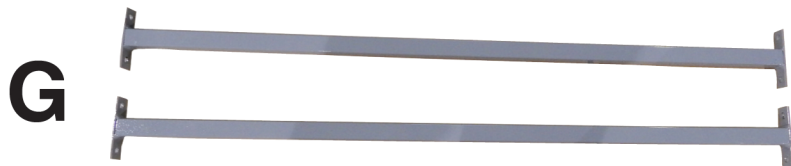
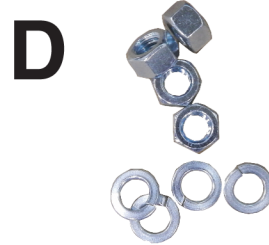
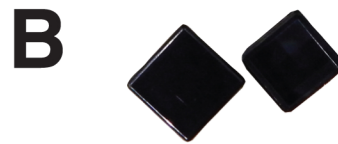
1428 - Champ 10 Slot Mobile Windshield Rack

CHAMP
Frame Straightening Equipment Inc.

Made In USA

Parts List

- A** (22) Foam Pads
- B** (22) 1" Caps
- C** (2) 1-1/2" Caps
- D** (4) - Nuts and Washers (For Wheels)
- E** (4) 4" Casters (2 Locking)
- F** (1) Angled Brace
- G** (2) Square Braces
- H** (2) Feet
- I** (2) Windshield Holders



WARNING Read all assembly instructions completely before attempting to assemble unit. Improper assembly could result in damage to unit or injury to user.

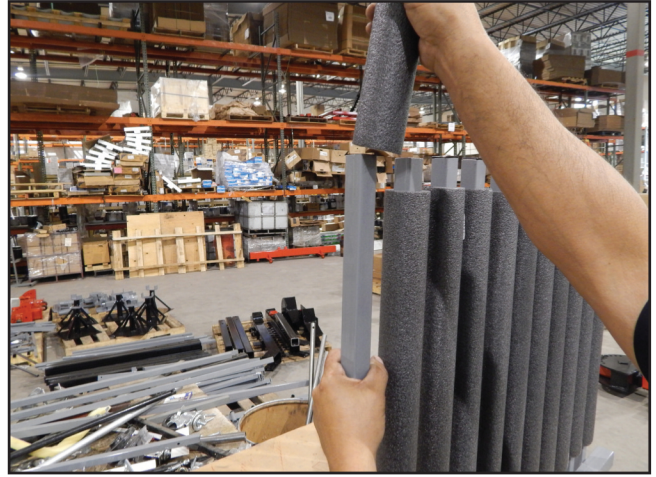
Auto Body Toolmart
Champ Frame Straightening Equipment, Inc.
2545 Millennium Dr., Elgin IL, 60124 (800) 382-1200
www.autobodytoolmart.com

1.



Add lubricant to one end of foam pad (A). Do this to all (22) foam pads (Dish soap works good as a lubricant.)

2.



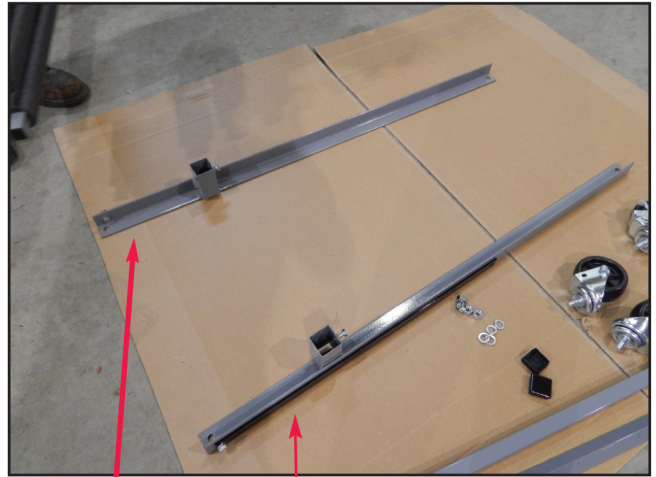
Slide foam pads (A) onto posts of windshield holders (I)

3.



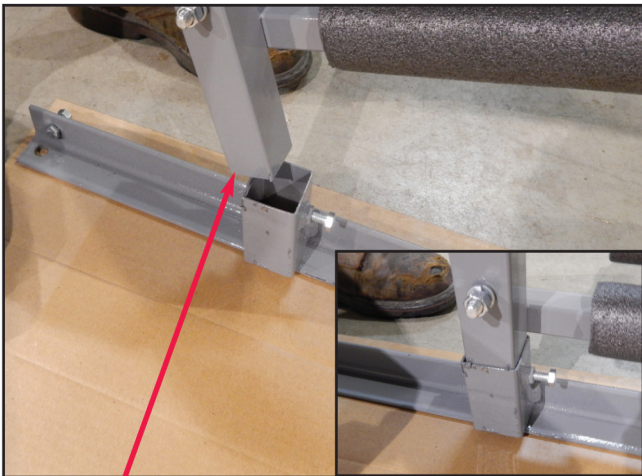
Install 1" caps (B) into the ends of the posts of the windshield holders (I)

4.



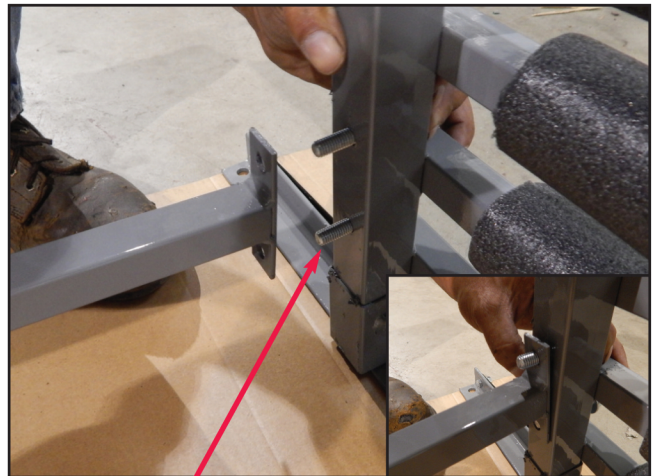
Lay out the feet (H) like above picture

5.



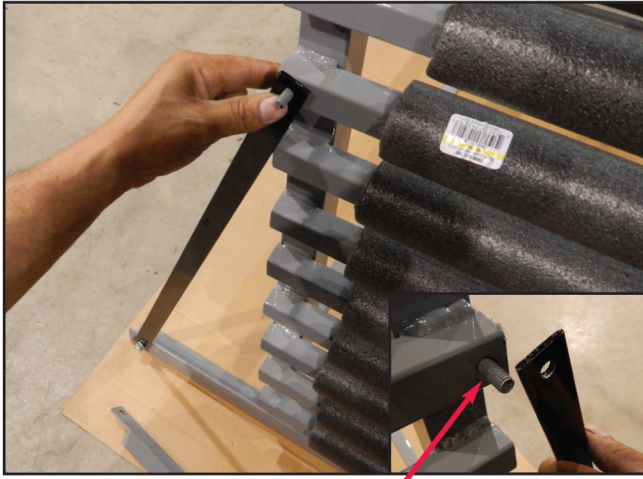
Insert post of windshield holder (I) into the foot (H). Do this to both sides

6.



Take off nut and washer from the bolts, and attach the square braces (G) to the windshield holders (I). Install top and bottom braces. Put the washer and nut back on the bolts

7.



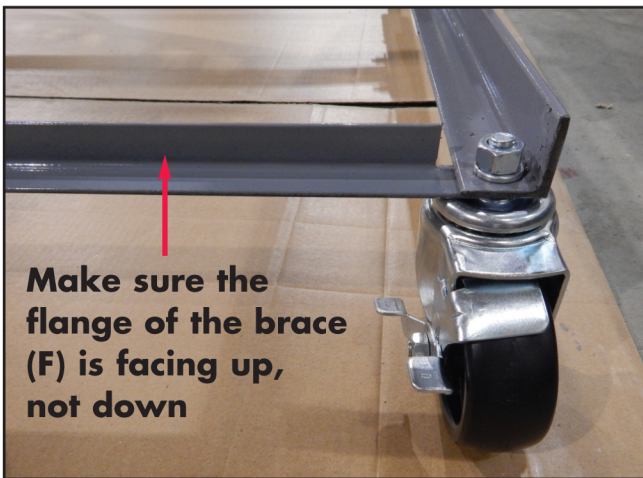
Remove the nut and washer from the bolt on the outside of windshield holder (I) and install the brace that is attached to the outside of the foot (H). Do this on both sides.

8.



Install rear wheels

9.



Slide the bolt of front wheels through the holes on the angled brace (F), and attach to the feet (H)

10.



Install (2) 1-1/2" caps (C) to the tops of the posts of the windshield holders (I)



Completed front view



Completed back view