

6271 - Champ Folding Bed Dolly

CHAMP

Frame Straightening Equipment Inc.



Made In USA



WARNING

Read all assembly instructions completely before attempting to assemble unit. Improper assembly could result in damage to the truck bed or injury to user.

Auto Body Toolmart

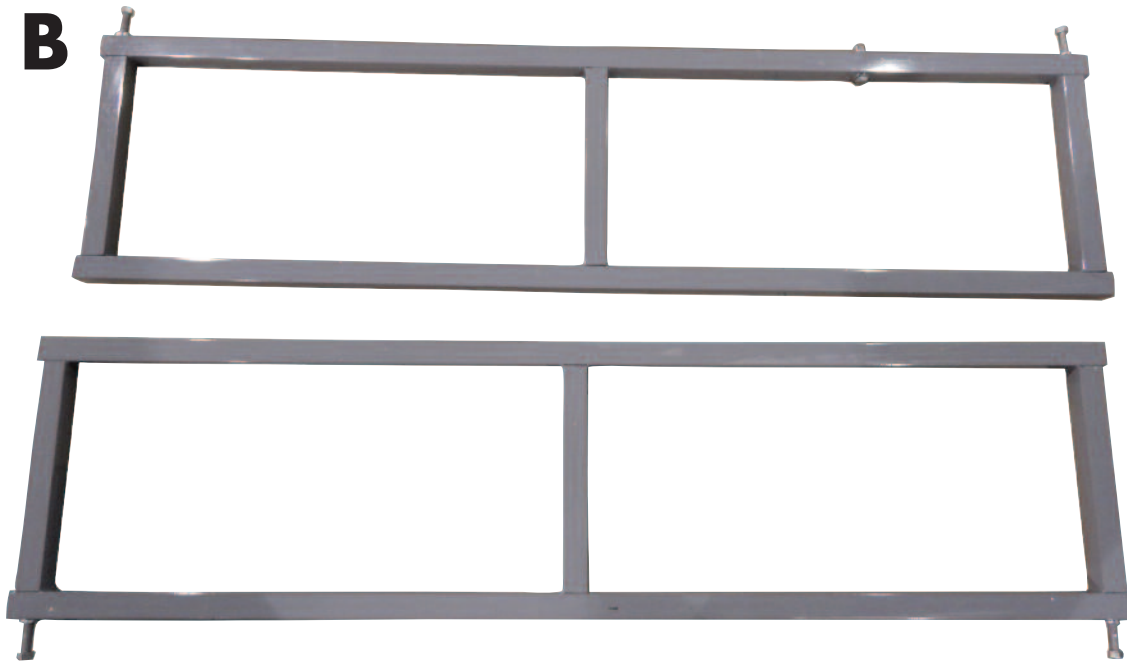
Champ Frame Straightening Equipment, Inc.

2545 Millennium Dr. Elgin, IL 60124 (800) 382-1200

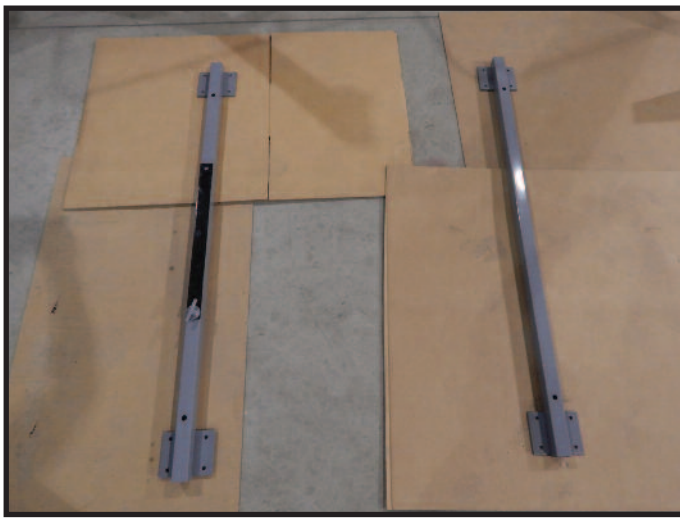
www.autobodytoolmart.com

Parts List

- A.** (2) Base Support Beams
 - B.** (2) Side Rails
 - C.** (4) Casters (2 Locking)
 - D.** (12) End Caps
 - E.** (16 each) Bolts, Nuts, Washers and Lock Washers
- Please note: the bolts that are pre-installed on the side rails already have the nuts and washers affixed to them

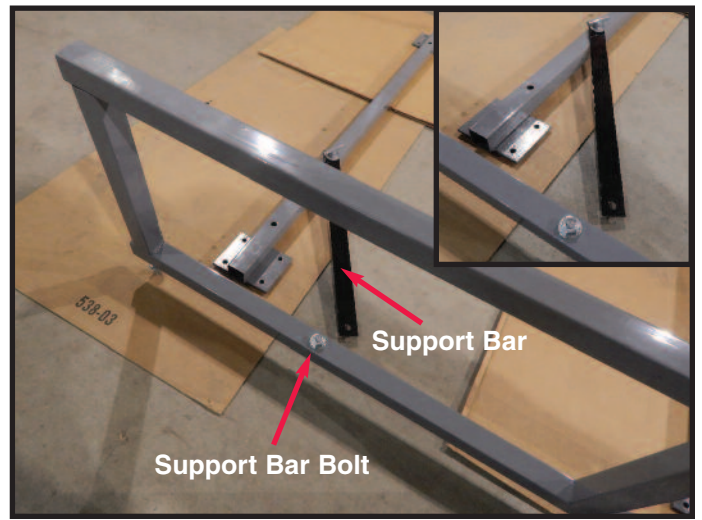


1.



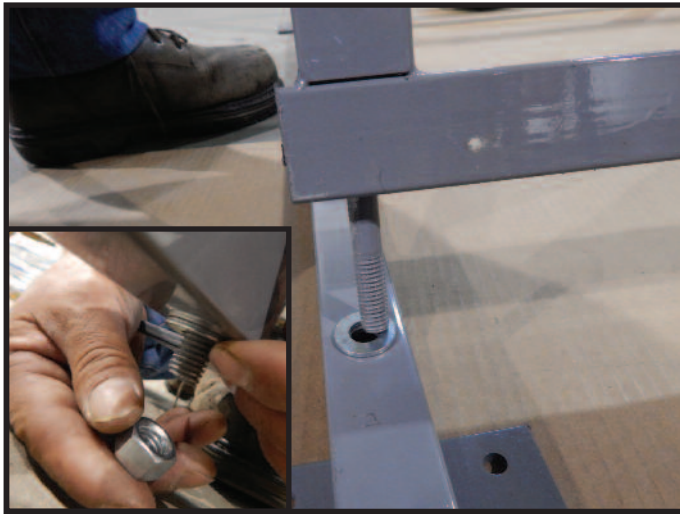
Layout the base support beams (A) like the above picture.

2.



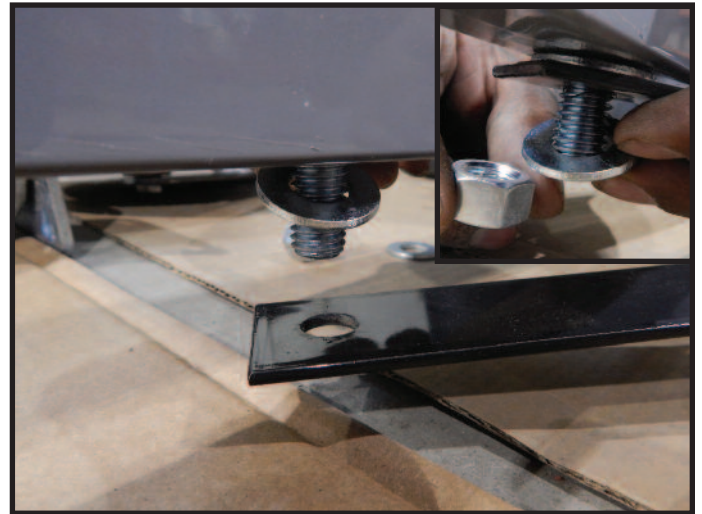
The next step is to attach the side rails (B) to the base support beams (A). When laying out the side rails, make sure to have the side rail with the support bar bolt, next to the base support beam that has the support bar, like the above picture.

3.



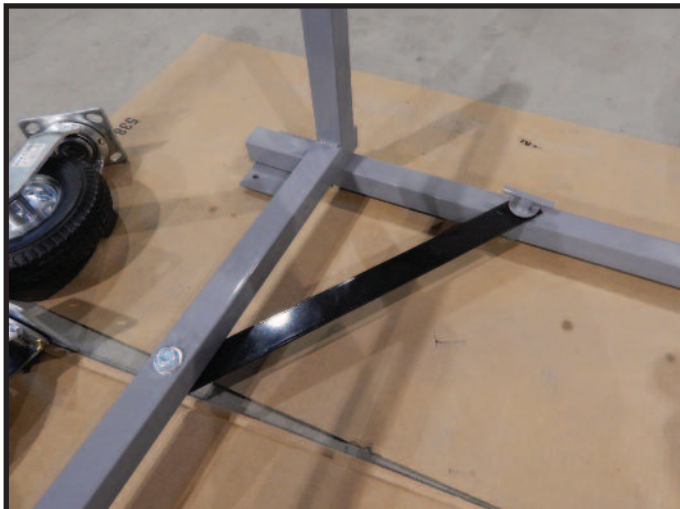
Insert the pre-attached bolts on the side rails (B) into the pre-drilled holes on the base support beams (A). Fasten with bolt.

4.



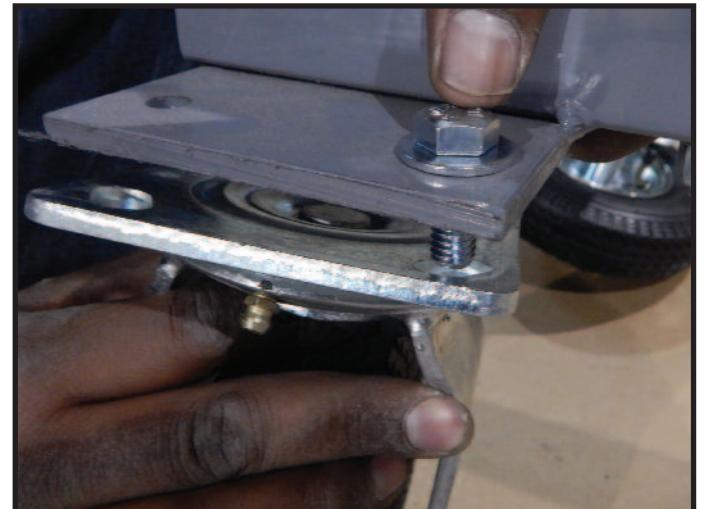
Attach the support bar to the bottom of the side rail (B) and fasten with bolt. (Make sure to place a washer on top of and below the support bar. See the above pictures)

5.



The above pictures shows how the support bar should look once attached to the side rail.

6.



Attach the (4) casters to the (2) base support beams. Slide the bolt through the washer and then through the base support beam and caster. Fasten with the lock washer and nut. Next, install the (12) end caps