

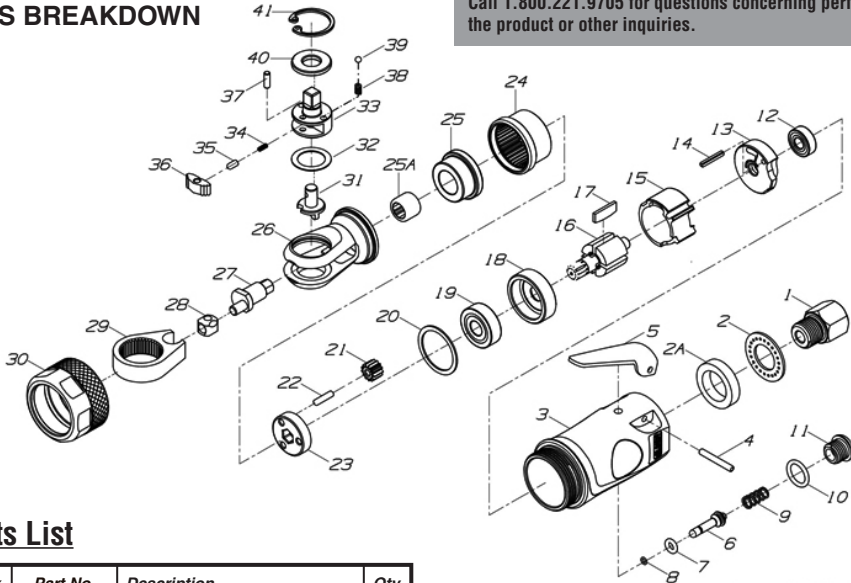


**Astro Pneumatic
Tool Company**
372 Old US Highway 52 South
Mount Airy, NC 27030

Model:
1111A

Product Type:
**1/4" PALM
RATCHET WRENCH**

PARTS BREAKDOWN



Call 1.800.221.9705 for questions concerning performance of the product or other inquiries.

Parts List

| Index | Part No. | Description | Qty |
|-------|-----------|-----------------|-----|
| 1 | 1111A-01 | Air Inlet | 1 |
| 2 | 1111A-02 | Exhaust Washer | 1 |
| 2A | 1111A-02A | Muffler | 1 |
| 3 | 1111A-03 | Housing | 1 |
| 4 | T210-A28 | Pin | 1 |
| 5 | 1111A-05 | Lever | 1 |
| 6 | 1111A-06 | Valve | 1 |
| 7 | 1111A-07 | O-Ring | 1 |
| 8 | 1111A-08 | O-Ring | 1 |
| 9 | 1111A-09 | Spring | 1 |
| 10 | 1111A-10 | O-Ring | 1 |
| 11 | 1111A-11 | Plug | 1 |
| 12 | 696ZZ | Ball Bearing | 1 |
| 13 | 1111A-13 | Rear End Plate | 1 |
| 14 | 1111A-14 | Pin | 1 |
| 15 | 1111A-15 | Cylinder | 1 |
| 16 | 1111A-16 | Rotor | 1 |
| 17 | 1111A-17 | Rotor Blade | 4 |
| 18 | 1111A-18 | Front End Plate | 1 |
| 19 | 608ZZ | Ball Bearing | 1 |
| 20 | 1111A-20 | Washer | 1 |
| 21 | 1111A-21 | Gear | 3 |

| Index | Part No. | Description | Qty |
|-------|-----------|----------------------|-----|
| 22 | 1111A-22 | Gear Pin | 3 |
| 23 | 1111A-23 | Gear Carrier | 1 |
| 24 | 1111A-24 | Internal Gear | 1 |
| 25 | 1111A-25 | Bushing | 1 |
| 25A | 1111A-25A | Needle Bearing | 1 |
| 26 | 1111A-26 | Ratchet Housing | 1 |
| 27 | 1111A-27 | Crank Shaft | 1 |
| 28 | 1111A-28 | Drive Bushing | 1 |
| 29 | 1111A-29 | Yoke | 1 |
| 30 | 1111A-30 | Lock Nut | 1 |
| 31 | 1111A-31 | Reverse Button | 1 |
| 32 | 1111A-32 | Washer | 1 |
| 33 | 1111A-33 | 1/4" Anvil | 1 |
| 34 | 1111A-34 | Spring | 1 |
| 35 | 1111A-35 | Lock Pin | 1 |
| 36 | 1111A-36 | Ratchet Pawl | 1 |
| 37 | 1111A-37 | Pawl Pin | 1 |
| 38 | 1111A-38 | Spring | 2 |
| 39 | 1111A-39 | Steel Ball | 2 |
| 40 | 1111A-40 | Thrust Washer (1/4") | 1 |
| 41 | 1111A-41 | Retaining Ring | 1 |