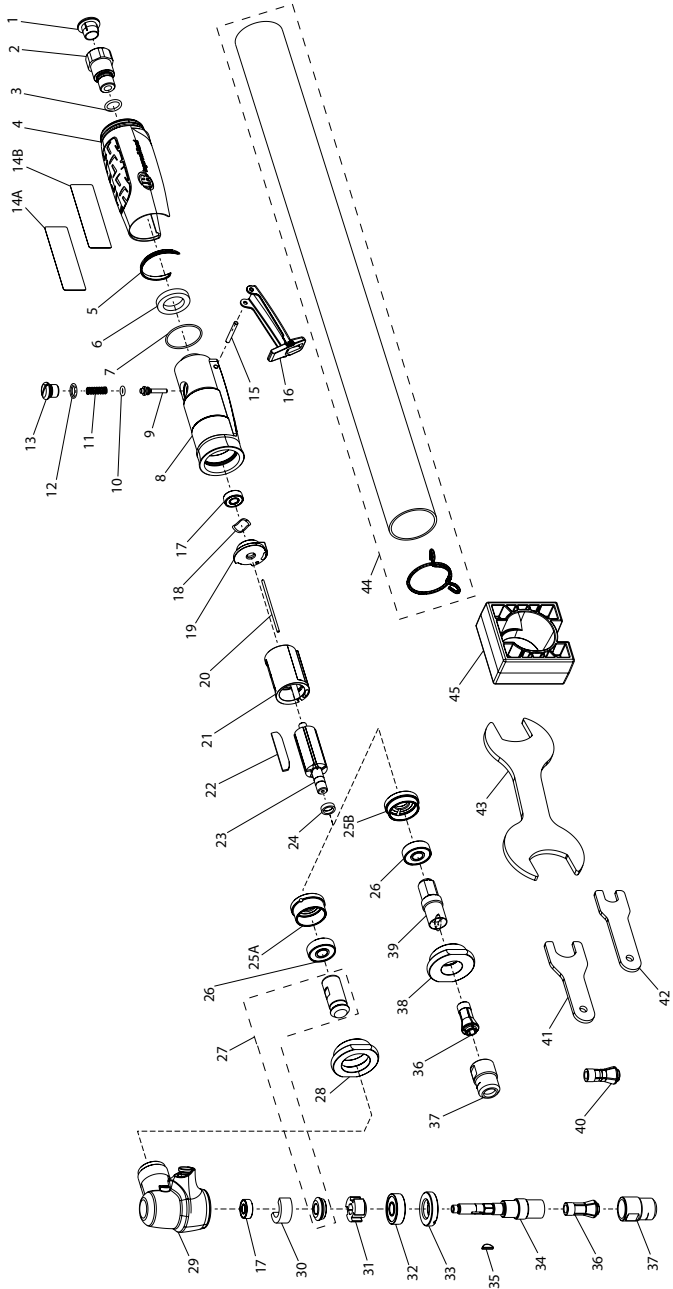


5102MAX and 5108MAX Air Die Grinder - Exploded View



(Dwg. TP2233-2)



48483671  
Edition 7  
March 2021

## 5102MAX and 5108MAX Air Die Grinder - Parts List

Item	Part Description	Part Number	Item	Part Description	Part Number
1	Plastic Plug	PF-PLUG	24	Spacer	RG1-448
2	Inlet Bushing Assembly	5108MAX-A565	25A	Endplate (for 5102MAX)	RG1-11A
*	Inlet Bushing	---	25B	Front Endplate (for 5108MAX)	RG1-11
*	Inlet Screen	---	26	Bearing	301-24
3	O-Ring	170-283	27	Gear Pinion Set (for 5102MAX)	5102MAX-A552-1.25
4	Sleeve	5108MAX-747	*	Pinion (for 5102MAX)	---
5	Gasket	5108MAX-223	*	Gear (for 5102MAX)	---
6	Muffler	5108MAX-311A	28	Clamp Nut (for 5102MAX)	5102MAX-27A
7	O-Ring	RG1-216	29	Angle Housing (for 5102MAX)	5102MAX-A550
8	Housing Assembly For 25k	RG1-A40-25K	*	Angle Housing (for 5102MAX)	---
*	Housing	---	*	Grease Fitting (for 5102MAX)	---
*	Bushing	---	*	Locking Pin (for 5102MAX)	---
9	Throttle Valve	5108MAX-302	*	Bushing (for 5102MAX)	---
10	Throttle Valve Seal	5108MAX-94	*	Spring (for 5102MAX)	---
11	Spring	RG1-51	*	O-Ring (for 5102MAX)	---
12	O-Ring	RG1-206	30	Wick (for 5102MAX)	RG1-560-1.25
13	Valve Plug	RG1-266	31	Hub (for 5102MAX)	HG1-108
14A	Tool Label (for 5102MAX)	5102MAX-301	32	Bearing (for 5102MAX)	5102MAX-24
14B	Tool Label (for 5108MAX)	5108MAX-301	33	Cap (for 5102MAX)	5102MAX-531
15	Pin	RG1-120	34	Collet Arbor (for 5102MAX)	5102MAX-591A
16	Lever Assembly	RG1-A400	35	Pinion Key (for 5102MAX)	301-579
*	Lever (stamp)	---	36	Collet, 1/4in.	301-700
*	Lever Lock	---	37	Collet Nut	301-699
*	Roll Pin	---	38	Clamp Nut (for 5108MAX)	5108MAX-306
*	Spring	---	39	Collet Body (for 5108MAX)	5108MAX-290
17	Bearing	RG1-22	40	Collet 6mm	301-700B
18	Wave Spring	RG1-278	41	Collet Nut Wrench	301-69B
19	Rear Endplate	RG1-12	42	Collet Body Wrench	301-69A
20	Pin	RG1-56L	43	Clamp Nut Wrench	5108MAX-26
21	Long Cylinder	RG1-3L	44	Piped Away Exhaust Kit	5108MAX-K284
22	Vane Pack (set of 5)	RG1-42L-LF-5	*	Spring	---
*	Vane	---	*	Pipe	---
23	Rotor	RG1-53L-5	45	Clamp Block	5108MAX-598

\* Indicates not illustrated.

### Parts and Maintenance

When tool life has expired, it is recommended that the tool be disassembled, degreased and parts separated by material for proper recycling.

Tool repair and maintenance should only be carried out by an authorized Service Center.

Refer all communications to the nearest **Ingersoll Rand** office or distributor.

### Related Documentation

Manuals can be downloaded from [ingersollrand.com](http://ingersollrand.com)

For additional information, refer to:

Product Safety Information Manual 04580288.

Product Information Manual 48483697.

Declaration of Conformity 48483697003.

